

H-ICS-X Instrument and Control Interface Package and Program

Description

The Hampden **Model H-ICS-X** Interface package and program consists of the following hardware and software necessary to control the Hampden series of ICS panels.

Hardware:

- A PID Controller

Software:

A graphically-oriented program, with documentation, to permit computer control of the panel's controller. A USB or Network connection is provided on the unit.

Parameter Access

All front panel user-programmed parameters (except input calibration parameters) are accessible enabling user generated application programs to:

- Monitor or alter (read or write) parameters such as process variables, setpoint (local or remote), auto/manual and remote/local setpoint status.
- Upload or Download controller configuration parameter packets.
- Upload or Download of a setpoint program packet (recipe).

Operating Functions

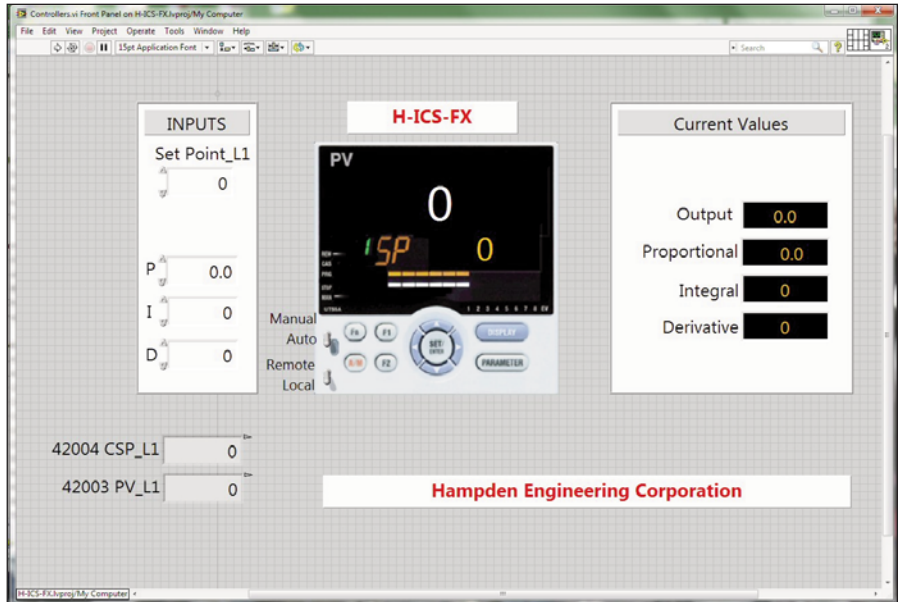
The following selections are available:

• Download Controllers

Permits user to download either configurations or recipes stored preconfigured for a single controller, controller group, or all controllers.

• Upload Controllers

Permits user to upload a complete controller configuration or recipe from a selected controller, a controller group, or all controllers to a designated binary file. This binary file can be converted to an ASCII file (template) format for off-line presentation of controller parameters.



Sample Screens from Hampden's MODEL H-ICS-X Software

• Detail Display

Provided for each controller and accessed by controller number. It is the only screen display where the user can alter parameters. The user may alter parameters (denoted by *) from keyboard which included SP, alarm values, plus setpoint programmer start/stop, reset, step selection and hold off/on. Parameter for options not in controller are not displayed.

• Report Display

Displays a periodic log of parameters from selected controllers per Report Configuration entry. The same information displayed can be routed to a printer for each new update.

Minimum Computer Requirements

Intel Pentium machine with VGA display

Recommended System

Hampden H-ICS-CS Computer System

All Hampden units are available for operation at any voltage or frequency

Hampden
ENGINEERING CORPORATION