

**Platte View Apartments**  
combine a peaceful country-  
like atmosphere with the  
convenience of city living.



**At Platte View you will find affordable one, two and three bedroom homes adjacent to a city park and nestled along the banks of the Platte River. Established cottonwood trees provide summer shade and give character to the community.**

**Rental rates are based on income so qualifying households will only pay 30% of income to a rental payment and this includes utilities.**

**If affordability and a convenient location are what you've been searching for — look no further than Platte View Apartments.**

*PLATTE VIEW*  
Apartments

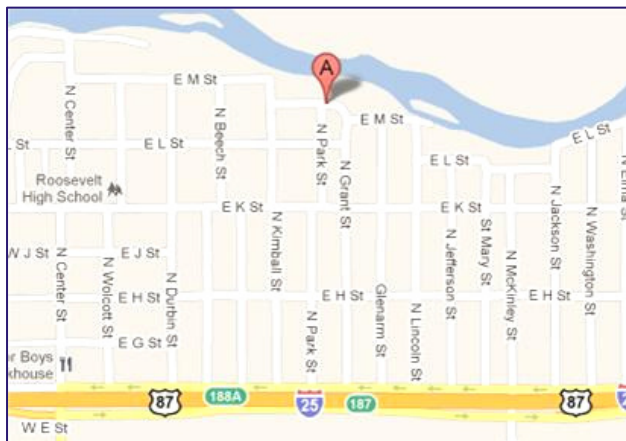
**614 East "M" Street**

**Casper, WY 82601**

**PH: 307-234-9932**

**[www.beacon.cc/platteview.html](http://www.beacon.cc/platteview.html)**

**Fax 307-265-6144**



  
**BEACON**  
MANAGEMENT, LLC

Managed  
By:

[www.beacon.cc](http://www.beacon.cc)

209 S. 19th St., Suite 100 \* Omaha, NE 68102

Phone: 402-341-0892

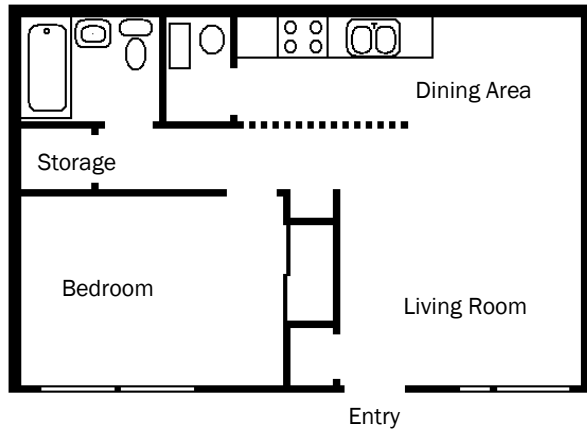
**Affordable  
One, Two and Three  
Bedroom Apartments**

*PLATTE VIEW*  
Apartments

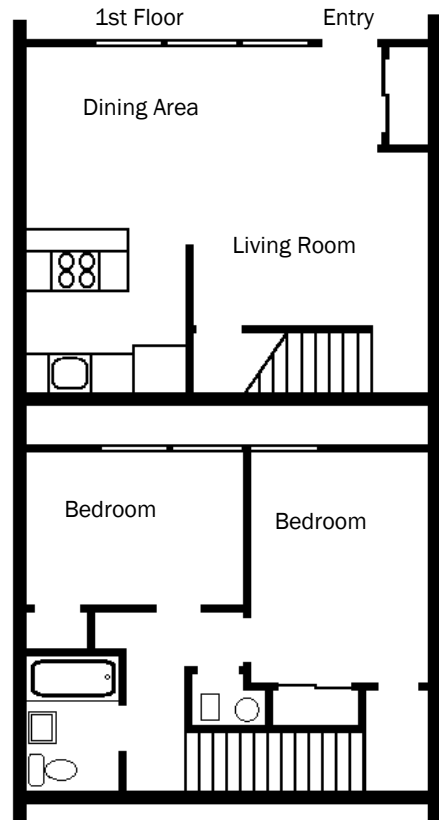


**614 East M Street  
Casper, WY 82601  
Tel: (307) 234-9932  
Toll Free: 888-298-0888**

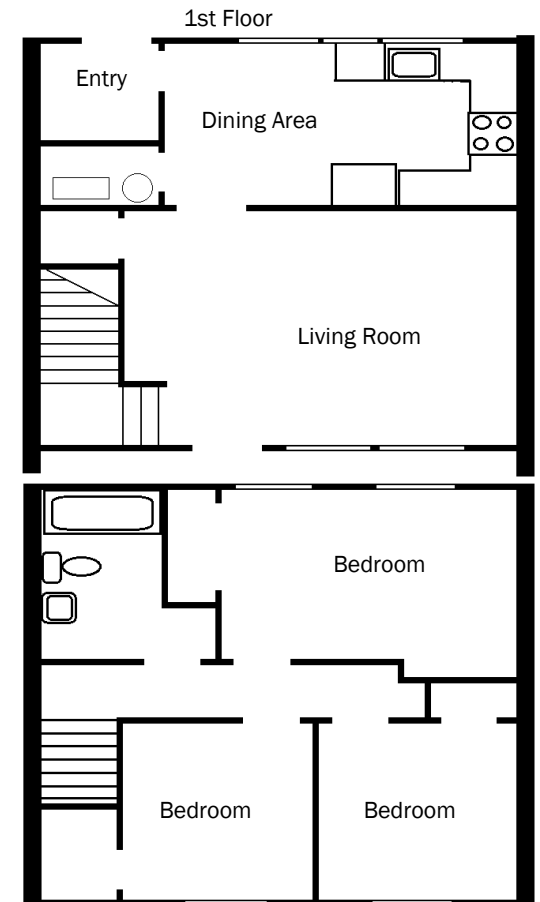
**One Bedroom**  
**One Bath**  
**667 Sq Ft**



**Two Bedroom**  
**One Bath**  
**839 Sq Ft**



**Three Bedroom**  
**One Bath**  
**1,000 Sq Ft**



### Income Guide

## Platte View Apartments

- 1 Person = 25,700 \*as of 7/14/2016
- 2 Person = 29,400
- 3 Person = 33,050
- 4 Person = 36,700
- 5 Person = 39,650
- 6 Person = 42,600



**Rent** \_\_\_\_\_

**Deposit** \_\_\_\_\_