



1975

**AN AMERICAN**

**ARCHERY**

*America's Fastest  
Growing Sport*

AMERICAN ARCHERY CATALOG NUMBER 75



## OLYMPIC LINE

### SUPREME . . . 68" & 70" TOPS FOR QUALITY ACCURACY . . . PERFORMANCE

Here again is the world's best target bow - sized and formulated especially for the competitive shooter who demands the ultimate in accuracy.

Remember, Champion Archers prefer AMERICAN. Even if you're not a World Champion, you'll feel like one with an AMERICAN bow. The SUPREME incorporates the latest thinking and advancements from the finest archery craftsmen. Beautiful to draw . . . it has the sensitive feel that serious archers want . . . Get renewed confidence!

- 2 Length: 68" & 70" - Code S 68 or 70  
 Weight: 25 lbs. to 50 lbs.  
 Draw Limit: Unlimited  
 Sight Window: 8"  
 Riser: Tropical Hardwoods & Lamination  
 Fistmele: 8 1/2" - 9 1/2"  
 Micro-Taper Super Flex Core  
 Position Stabilizer Insert  
 Flannel Bow Case

### TIPS ON BOW CARE

1. Store your bow in a cool, dry place. We recommend hanging your bow on two pegs with the limb tips pointing down and UNSTRUNG.
2. Periodically wax your bow with a high grade wax.
3. Use a protective bow case to avoid scratches and dents.
4. Periodically replace bow string.
5. Proper Stringing . . . Improper bow stringing may seriously damage your bow, and you can hurt yourself - don't use the old push-pull method - play it safe - use a Bow Stringer.

The step-through method of stringing is no longer considered proper for recurve bows. Continued use of this method can easily twist the lower limb and ultimately result in breakage. This type of

## THE AMERICAN COMPOUND BOW - ACB

A compound bow which gives the hunter the feel of security with the combination of balance and stability. Yet, while stalking, a bow which weighs an even 4 lbs. and is pounds lighter than many on the market. The overall length of this trusty bow is 48" long and features a positive hunters grip made of magnesium. Simple tuning for weight and cable adjustment satisfies the most avid hunter. Sight window is cut 3/8" past center and is designed for easy sight mounting.

Added to the above features, we furnish this bow in a flat black wrinkle finish.

When ordering, please specify weights as follows:  
 35/45, 40/50, 45/55, and 50/60

Draw lengths available 27" to 32".

- Options Available:**  
 ACCB - Vinyl Case  
 ACBP - Factory Installed Plunger  
 ACBS - Custom Made Bow String  
 ACBF - Flipper Rests  
 ACBH - Plunger Hole Only  
 ACBQ - Attachable Quiver Holds 7 Arrows  
 ACCC - Camouflaged Carrying Case.

**Compound Warranty**  
 6 months on limbs & life time on handle.  
 See guarantee for other American Bows on back cover.

### AMERICAN TITLEIST - 66" ULTIMATE SATISFACTION

When it comes right down to it, if the tournament is important, the choice is the TITLEIST. When archers want to shoot their best, they always rely on the bow that has proven itself year after year, tournament after tournament.

Every shooting feature is found in the TITLEIST bow, quality through and through. AMERICAN TITLEIST . . . The "Choice of Champions" - brings competition and quality at moderate prices to advanced and recreational archers.

- Length: 66" Code AT 66  
 Weight: 25 lbs. to 50 lbs.  
 Draw Limit: Unlimited  
 Sight Window: 8"  
 Riser: Tropical Hardwoods  
 Fistmele: 8 1/2" - 9 1/2"  
 Micro-Taper Super Flex Core  
 Position Stabilizer Insert  
 Flannel Bow Case

### V.I.P. (-) SUPER HUNTING TAKE-DOWN 60"

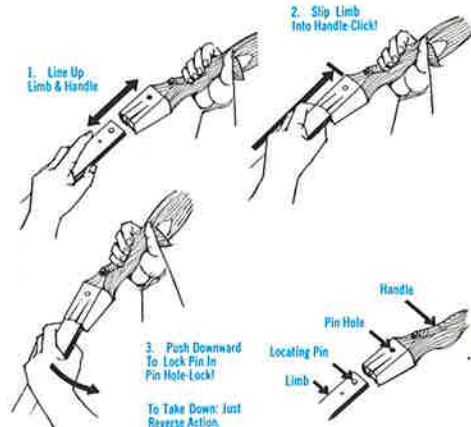
With this NEW Take-Down bow you have the ultimate in convenience, as well as performance.

The bow that can be carried around the world from Alaska to Africa, wherever big game is hunted.

Split second assembly! We designed our new Hunting Take Down bow to be the simplest and most advanced bow ever engineered.

Just insert the perfectly matched American limbs into the handle, and they are locked into place for your precision shooting. This is Americans exclusive "fast limb-coupling" - faster - quicker than any. No bolts are required. Alignment is automatic and secured by a locating pin and pin hole matched for it's perfect fit and positive limb alignment every time. Tested and proven before production was even started. Strictly designed to satisfy the Take-Down bow archer for fast coupling limbs.

- V.I.P. TAKE DOWN**  
 Length: 60" - Code VIP 60  
 Weights: 30 lbs. to 65 lbs.  
 Draw Limit: Unlimited  
 Sight Window: 6"  
 Riser: Exotic Hardwood  
 Fistmele: 8 1/2" to 9 1/2"  
 Super Flex Core  
 Position Stabilizer Insert  
 Extra: Padded Case



**TO ORDER SPECIFY: 1. BOW CODE; 2. BOW WEIGHT; 3. RIGHT OR LEFT HAND; 4. BOW LENGTH**

*Larry Armstrong*  
 AA General Manager

**Selecting Correct Arrows Preferred Method—Method 1**  
 Draw a measuring arrow (marked in inches) in your bow. At full draw, your correct length is the point at which the arrow stops in relation to the front of the arrow shelf. See illustration above.



Note: Arrow length is measured from bottom of neck to the back of the head.

**Alternate Method—Method 2**

Spread Measurement	Arrow Length
57"-59"	24"-25"
60"-62"	25"-26"
63"-65"	26"-27"
66"-68"	27"-28"
69"-71"	28"-29"
72"-74"	29"-30"
75"-77"	30"-31"



AMERICAN COMPOUND BOW



SUPREME



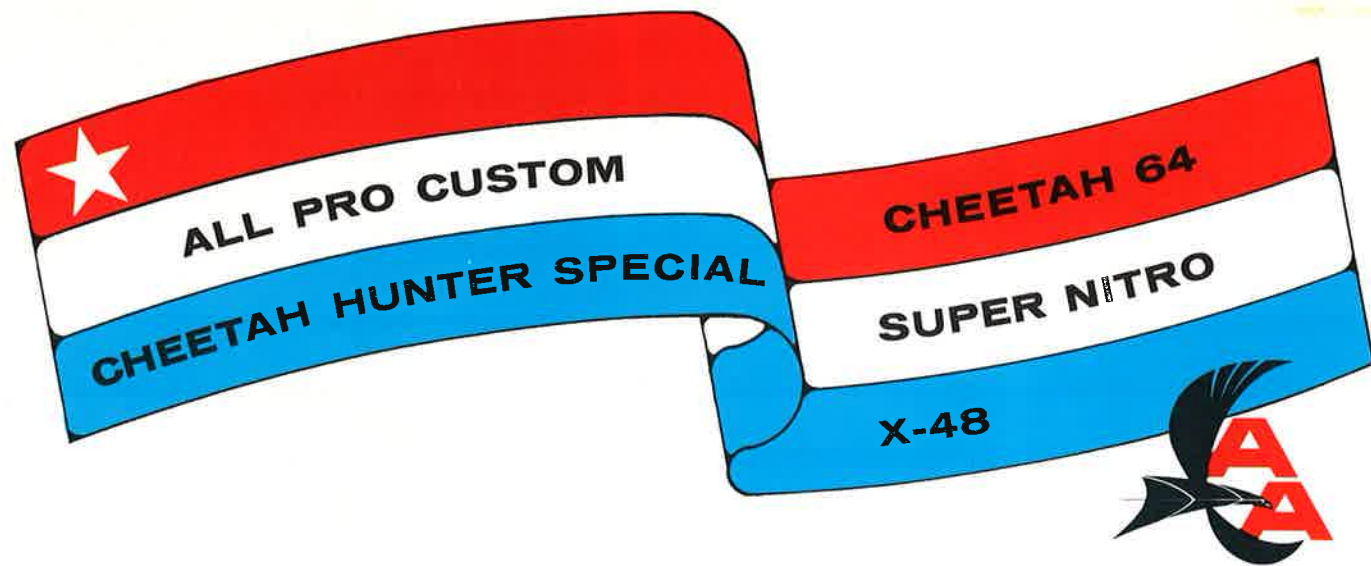
AMERICAN TITLEIST



V.I.P. SUPER HUNTING TAKE-DOWN



Manufactured by PSE  
 Licensed under Allen  
 Patent No. 3,486,495



### ALL PRO CUSTOM-60" Ultimate Super Speed Hunting Bow

There are hunters who demand something beyond conventional standards of performance and design. That's why we have the ALL PRO CUSTOM.

The results of our engineering research and field testing have jelled all at once. This ALL PRO CUSTOM has proven itself with white tails, moose, bear and caribou. Hunters have endorsed this bow wholeheartedly as the ultimate hunting bow . . . both in looks and performance. It shoots right where it points. So whisper quiet, the only sound you hear is the beating of your heart. Our new tapered limb balance, center shot, 7" sight window, balance weight and solid feel, gives you better limb speed and more impact power that results in extra yardage.

The ALL PRO CUSTOM is a bow you will own with pride and shoot with confidence.

Length: 60" Code APC 60  
Weight: 40 lbs. to 75 lbs.  
Draw Limit: Unlimited  
Sight Window: 7"  
Riser: Tropical Hardwoods,  
Laminations, and capped with  
black & white overlays.  
Glass: Dark  
Fistmele: 8½" - 9½"  
Super Slim Taper Core  
Built-in Hunter's Grip  
Positioned Stabilizer Insert  
Flannel Bow Case

#### TO ORDER SPECIFY:

1. BOW CODE;
2. BOW WEIGHT;
3. RIGHT OR LEFT HAND

### CHEETAH HUNTER SPECIAL - 58"

**The Game Getter . . . Year After Year**  
Endorsed by Art LaHa, World Famous Bow Hunter and Guide who says "Shooting the Cheetah Special is like shaking hands with an old friend." Being a professional guide, here and in Alaska, is an exacting profession. It demands a bow that meets exacting standards . . . rugged, fast, capable of taking the toughest use day after day . . . absolute dependability, reliable accuracy, and plenty of knock-down power. Owning a Cheetah Hunter Special is the mark of a serious hunter.

### CHEETAH 64"

**"Trophy Getter" - "Something Very Special"**  
Jerry Kramer . . . All Pro Green Bay Packer Number 64 and an outstanding big game hunter endorses this bow as the finest on the market.  
This "Cheetah 64" set its mark in the archers' world with another "World Record Caribou". We took suggestions from the world's best trophy hunters. This Cheetah 64 will take on your kind of game from white tails, bear, to World Record Caribou. Count on the Cheetah's superb strength and speed to keep up with the fleetest game.

### SUPER NITRO - 54"

**Best For Brush Country Deer**  
The SUPER NITRO has the brush-cutting ability and knock down power. Best for those hunters who hunt deer in brushy sections, from trees and blinds. Very accurate at moderate ranges.  
Power in a small 54" package . . . easy to tote, fast drawing, fast handling, and whisper quiet.

### X-48 - 48"

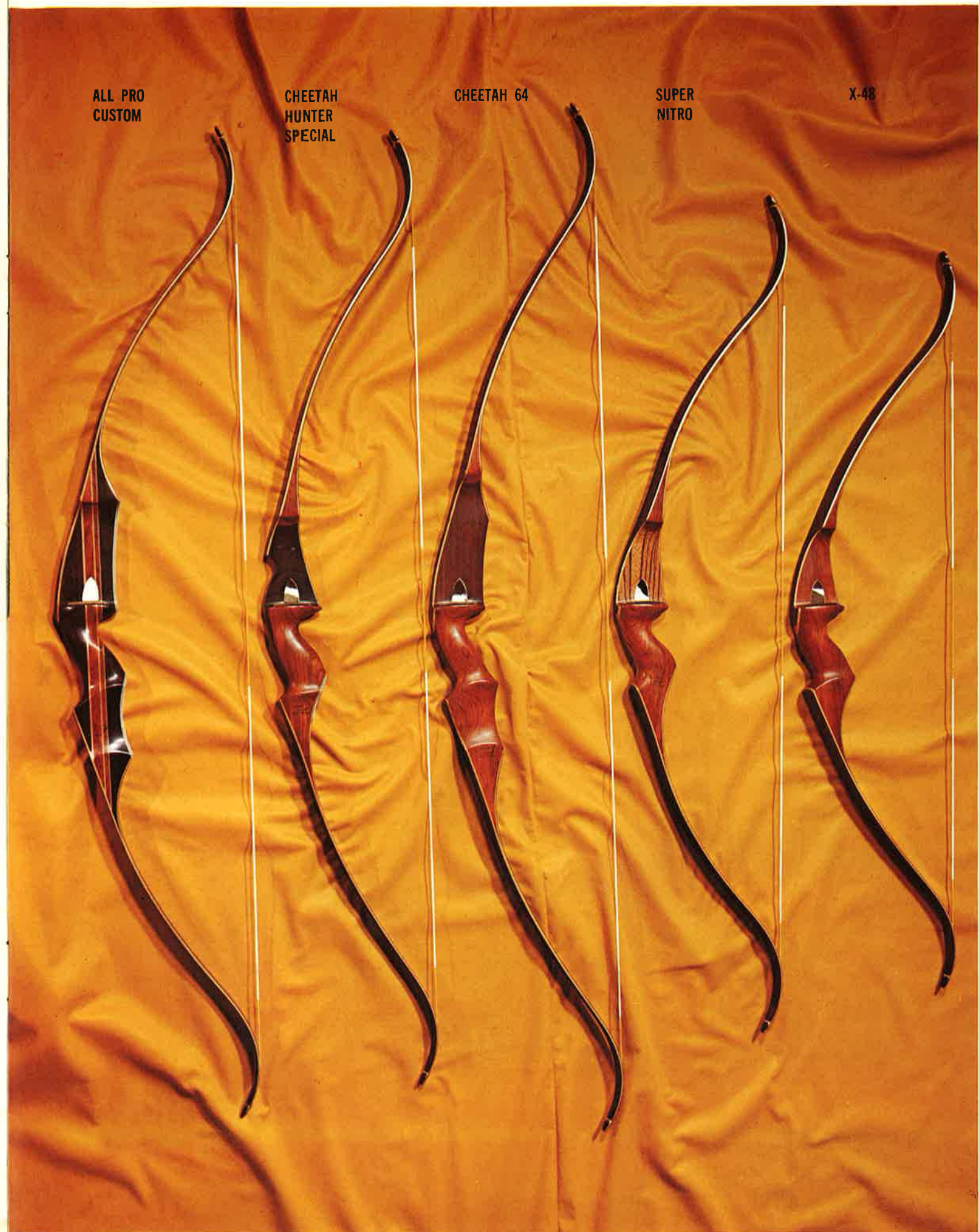
**For the Hungry Hunter**  
The Superb proven "Shortie". Here's more than meets the eye to any fine short bow. The X-48 "Shortie" offers the demanding hunter the combination of highest velocity and flattest trajectory for greater killing power. The X-48 incher is the bow with the punch . . . fast . . . sleek . . . easy to draw. Designed and proven the action seeking bow for heavy cover . . . and tree stand hunting. All the bow you'll need for those close in shots that require deadly accuracy.

Length: 58" Code C 58  
Weight: 40 lbs. to 75 lbs.  
Draw Limit: Unlimited  
Sight Window: 6"  
Riser: Tropical Hardwoods,  
Capped overlay  
Glass: Dark  
Fistmele: 8½" - 9½"  
Super Slim Taper Core  
Built-in Reminder Grip

Length: 64" Code C 64  
Weight: 25 lbs. to 75 lbs.  
Draw Limit: Unlimited  
Sight Window: 8"  
Riser: Tropical Hardwoods  
& Laminations  
Glass: Dark  
Fistmele: 8½" - 9½"  
Super Slim Core  
Positive Hunter's Grip

Length: 54" Code SN 54  
Weight: 35 lbs to 75 lbs.  
Draw Limit: 32"  
Sight Window: 5½"  
Riser: Tropical Hardwoods &  
Capped overlay  
Glass: Dark  
Fistmele: 8½" - 9½"  
Super Slim Core  
Reminder Grip

Length: 48" Code X 48  
Weight: 40-45-50-55 lbs.  
Draw Limit: 32"  
Glass: Dark  
Super Slim Core  
Fistmele: 8½" - 9½"  
Riser: Tropical Hardwoods &  
Capped overlay  
Reminder Grip





**AMERICAN HUNTER**

Choice of Deer Hunters

**SHARK**

Tops For Versatility . . . Super Speed . . . Performance

**FLASH**

Schools - Clubs - Beginners

**YOUNG AMERICAN**

56" All Purpose - Budget Priced

**FIBER GLASS BOWS**

Ideal for Camps, Schools & Beginners



**AMERICAN HUNTER - 56"**

Choice of Deer Hunters

The most celebrated deer bow in the world of archery! Its the favorite of many who prefer a fast, flawless, positive hunter's grip and a hard hitting bow.

Ideal for the woman who loves to hunt.

A classic design sets this hunter apart from all others and tells you that this is the hunting bow you've been looking for in the medium price range. AMERICAN HUNTER has improved with age . . . quality you'd look for in far more expensive bows.

Length: 56" AH56  
Weight: 35 lbs. to 70 lbs.  
Draw Limit: Unlimited  
Sight Window: 6"  
Riser: Tropical Hardwoods - Capped White  
Glass: Dark  
Fistmele: 8 1/2" - 9 1/2"  
Super Slim Taper Core  
POSITIVE Hunter's Grip

**SHARK - 62"**

Tops For Versatility . . . Super Speed . . . Performance

The best starter on any line - tournament shooting - field archery - bow hunting - or, just backyard practices. It has all the class, stability and power to meet the highest standards. Excellent for any instruction programs.

It employs the ultra smooth pulling for any lad or lass to own with pride and shoot with pleasure.

Length: 62" Code Sk62  
Weight: 25 lbs. to 55 lbs.  
Draw Limit: Unlimited  
Sight Window: 5 3/4"  
Riser: Tropical Hardwood - Capped White  
Glass: Dark  
Fistmele: 8 1/2" - 9 1/2"  
Super Slim Core  
Reminder Grip

**FLASH - 60"**

Schools - Clubs - Beginners

Well suited to the needs of young beginner and intermediates . . . built to take a lot of punishment that kids dish out. Great all around 60" bow.

The FLASH . . . The perfect bow for instructional use for Schools and Scouts. Its design features rarely seen in a price range that cannot be beaten.

Length: 60" Code F60  
Weight: 20 lbs. to 45 lbs. in 5 lb. increments at 28"  
Draw Limit: Unlimited  
Sight Window: 6"  
Riser: Assorted Hardwoods  
Glass: Dark  
Fistmele: 8 1/2" - 9 1/2"  
Sure Grip

**YOUNG AMERICAN - 56"**

56" All Purpose - Budget Priced

The YOUNG AMERICAN - a new, exciting all round bow for the young pro or beginning archers. At a price that's affordable and a quality that's incomparable. Ideal for the instruction at schools and camps but built for the young hunter. Many features you wouldn't expect in this price range.

Here is the perfect bow for the beginner - school - designed to help you develop techniques easily and gradually. Its full working recurves will give you the real feel of archery.

Length: 56" Code Y A 56  
Weight: 20 lbs. to 45 lbs. in 5 lb. increments at 28"  
Sight Window: 5"  
Riser: Hardwoods  
Glass: Dark

**FIBER GLASS BOWS**

Ideal for Camps, Schools & Beginners

The ideal, low-cost way to start enjoying the fun and excitement that archery offers. AMERICAN offers dependable bows with perfect lengths. Shoots either right or left handed.

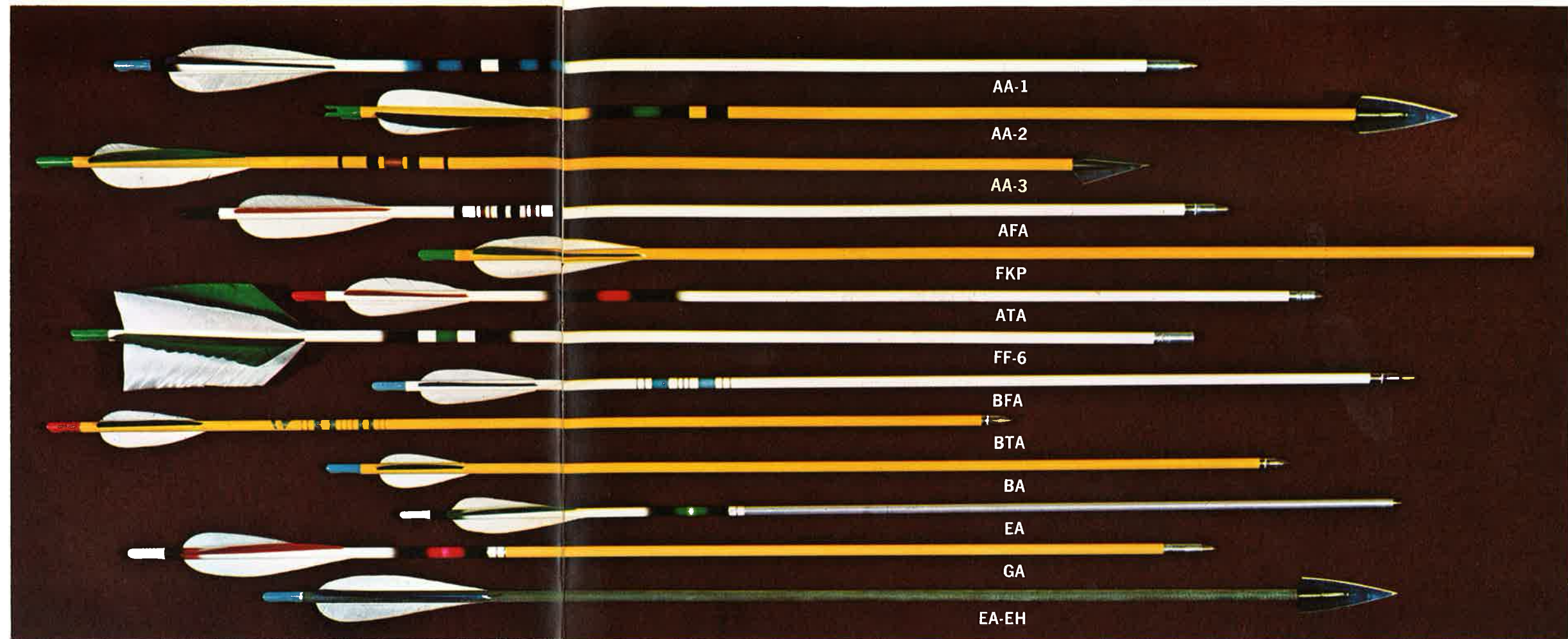
GB-48": 20/25 lb.  
GB-54": 25/30 lb.  
GB-60": 25/30 lb.  
30/35 lb.

TO ORDER SPECIFY: 1. BOW CODE; 2. BOW WEIGHT; 3. RIGHT OR LEFT HAND





100 ARROW DISPLAY UNIT



AA-1

AA-2

AA-3

AFA

FKP

ATA

FF-6

BFA

BTA

BA

EA

GA

EA-EH



### ARROWS BY AMERICAN

American manufactures three basic types of arrows - aluminum, fiberglass and wood. All arrows are fletched with the American parabolic - air flow fletching, giving less wind resistance and a quiet flight.

### WOOD ARROWS BY AMERICAN

**AA-1** Our supreme Port Orford Cedar Shaft. Excellent quality, spine-matched and weight matched. Colorful crest.

**AA-1 L** Fletched arrow - full length - no points.

**AA-1** Fletched arrow - cut to length with your choice of (T) Target, (F) Field or (H) Hunting Points installed.

**AA-1 Set** Fletched arrow - combination sets. 6 (F) Field and 6 (H) Hunting points installed.

**AA-2** Our most popular Port Orford Cedar Shaft. Spined - matched - Colorful crest.

**AA-2L** Fletched arrow - full length - no points.

**AA-2** Cut to length with your choice of (T) Target, (F) Field or (H) Hunting points installed.

**AA-2 Set** Fletched arrow - combination sets. 6 (F) Field and 6 (H) Hunting points installed.

**AA-3** Hunters Arrow. Spine matched, Port Orford Cedar, Crested. Economically priced. Three fletch. 29" and 30" lengths. F - Field arrow. H - Hunting points installed.

Set - Combination sets, 6 field and 6 hunting.

**AFA** Field arrows. Spined, Port Orford Cedar. Economically priced, three fletch. 28" and 30" lengths. Packed in:

1 dozen pack - 6 dozen display - 100 display.

**FKP** A full length Port Orford Cedar arrow. Three fletched air flow feathers, spined matched, uncrested. No points.

**ATA** Target Arrow, Port Orford Cedar, Spine-Matched. Best for schools, clubs, camps and backyards. Quality feathers and crested.

1 dozen - 6 dozen display - 100 display.

**FF-6** A six feathered FLU-FLU arrow with rubber blunts or metal blunts.

**BTA** Beginners Target Arrow. Cedar crested, knurled target point. Lengths 26" and 28".

100 Display Unit only.

**BA** Beginners Cedar Arrows. Economically priced. Target point. Available lengths 24", 26" and 28".

100 Display Unit only.

### ALUMINUM "GAME GETTER" WITH NEW SWITCH-A-POINT SYSTEM

ANODIZED (CAMO GREEN)

sizes: 1918-2016-2018-2020.

**EAL-SP** Fletched arrow, full length with insert, field point and broadhead adaptor loose.

**EAC-SP** Fletched arrow, cut to length with insert installed, field point, and broadhead adaptor loose.

**EAH-SP** Fletched arrow, cut to length, with insert installed, field point, broadhead adaptor, and choice of hunting broadhead loose.

### ALUMINUM ARROWS BY AMERICAN

The ultimate in Easton Aluminum shafts, made especially for the tournament. Available sizes, 1416 - 1616 - 1716 - 1816 - 1916 (24SRTX).

**EA-L** Fletched arrow. Full length with target point loose.

**EA-T** Fletched arrow. Cut to length with your target point installed.

**XX-75 ARROWS AVAILABLE.**  
Sizes: 1918 - 2016 - 2018 - 2020 - 2219. (See Price Sheet.)

### FIBER GLASS "HUNTERS GREEN" WITH NEW SWITCH-A-POINT SYSTEM

SIZES: 7-8-9-10-11. 35 lb. to 70 lb.

**GAL-SP** Fletched arrow, full length with insert, field point, and broadhead adaptor loose.

**GAC-SP** Fletched arrow cut to length with insert installed, field point, and broadhead adaptor loose.

**GAH-SP** Fletched arrow cut to length, with insert installed, field point, broadhead adaptor, and choice of hunting broadhead loose.

### FIBER GLASS ARROWS BY AMERICAN

Supreme fiber glass for target arrows give top performance under all conditions. Sizes available 3-5-7. Weight range 20 lbs. to

40 lbs. Specify proper size or weight and lengths.

**GA-L** Fletched arrow. Full length with target point loose.

**GA-T** Fletched arrow. Cut to length with your target point installed.

### NEW . . . SWITCH-A-POINT ARROWS BY AMERICAN - ALUMINUM AND FIBERGLASS

The use of the S-A-P system gives you the versatility of using the same arrow for either field shooting and hunting by simply unscrewing the point and replacing it with the other. The most versatile - economical way to buy arrows.

### HUNTING BROADHEADS & PRACTICE POINTS

No. 1 - Hi-Precision 3-Blade



No. 2 - Super Hilbre® 4-Blade



No. 4 - Arrow-mate 4-Blade



No. 5 - A Razorhead 4-Blade AUX. RAZORHEAD EXTRA BLADES ONLY (Not Shown) State Sizes 5/16" or 1/32"



200NS - Field Point Non-skid



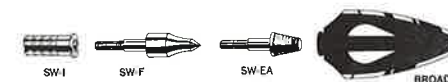
200MB - Blunt



TP - Target Point



RB - Rubber Blunt



Specify: For Glass or Aluminum arrows, and sizes.

BROADHEAD PRO-TEC-TO-TIPS Broadhead Protection No. PTT-3 - 3 Blade No. PTT-4 - 4 Blade



**TARGET-MATTS**

Target Matts Densely Compressed straw Burlap covered . . . Popular sizes for Schools, Camps, Competition.  
F.O.B. Oconto Falls, Wis.  
TM-36" 30 lbs.  
TM-48" 55 lbs.

**NEW** EFM-36" Economy Foam Rubber

**TARGET STANDS**  
Metal Easel Stand that holds Target low to the ground 36" or 48" Matts. (Not Shown)  
TS-1

Target Stand on Wheels Fits both 36" & 48" Matts.  
TS-2

**TARGET FACES**  
Four Color Faces Non-glare colors on heavy skirted toughened with draw string.  
TF-36"  
TF-48"  
Four Color Heavy Tag Paper - Square Face.  
PF-24"  
PF-36"  
PF-48"

Hunting Broadhead Faces Set Black & White Animals Inc.  
Group 1 - Bear, Deer or Moose  
40" x 28" (3)  
Group 2 - Antelope, Mt. Lion or Ram  
22" x 28" (3)  
Group 3 - Coon, Goose, Javelina or Coyote  
14" x 22" (4)  
Group 4 - Pheasant, Rabbit, Duck or Prairie Dog. 11" x 14" (8)  
BRT-18 Assorted faces (18)

INDOOR - PAA, ALOA, AIAA Blue & White Tag PAA-20"

TARGET FACE STAPLES Pkg. of 4 - TFS

**SIGHTS**

CAS Target Field Sight Target & Field sight, excellent design, sturdy construction with hooded ball sight on post.  
CAS

CHS Hunting Sight With Multi-color Beaded Pins.  
CHS

**NEW** ATT  
New revised edition of famous American Trailing Tips.

**ARROW RESTS**

Hoyt Pro Rest HPR  
Brush Hunting & Target Rest. BR

AMERICAN Arrow Plate & Rest. Insures quietness for hunters. ACR (All Rests Adhesive Backed)

ACBF - Flipper Rests  
ACBP - Plunger Button

**ACCESSORIES**

Tournament & Field Belt Quiver - Complete with belt, clip, score card holder, pencil slot & large zippered pocket for accessories.  
WTQ

Shoulder Quiver - Vinyl - Holds one dozen arrows with adjustable strap & large zippered pocket for accessories  
WSQ

Hip Quiver - Extremely good for all type of shooting. Large zippered pocket, pencil slot, clip for score card, belt tunnel & tie-down thongs. WHQ

Standard Target Quiver - High quality vinyl quiver with ring. Q-11

Economy Target Quiver - High quality vinyl with belt look. Ideal for schools, camps, backyard.  
Q-22

American Arrowmate Broadhead Quiver High impact plastic quiver with revolving barrel, keeps arrow sharp and safe, fits any broadhead. AMQ

Bow Quiver - "Quiffer" - Sturdy, light weight, broadhead protection. Holds 4 arrows safe & silent.  
WBQ

Kwikee Kwiver - Fits any bow. Holds 4 arrows. Snap on & off in seconds.  
KKQ

Ground Quiver - A metal quiver for holding bow and arrows while target shooting. Ideal for schools. MGQ

Hunters Arm Guard - Elastic fasteners, top quality with suede lining and 2 steel staves. 14

Target Arm Guard - 2 large elastic straps. Stave & suede lining. 17

Training Arm Guard - Extra long 3 elastic strap for training or hunting. Man-made leather with suede lining. 16

Soft Leather Glove - Closed end, double seam, adjustable strap. S-M-L 19-A

Soft Moccason Glove - Tanned single seam, adjustable strap. S-M-L-XL 19-W

Marshall Type Tab - Shell cordovan, double thickness. S-M-L MT

Hair Type Tab - Smooth clipped calf hair with soft liner. S-M-L HT

Leather Tab Single thickness. S-M-L RT

Sta-Jac Arrow Cinch - Holds arrow on the bow in position for instant shooting. SJ

Saunders Arrow Kwik Lok - Holds arrow in ready position for fast shooting. KL

AMERICAN Bow String Wax - Keeps string strands together and lengthens string life, plastic case. BWS

Brush Deflectors - Make your bow brush-proof, keep twigs and weeds from clogging up between string and bow tip. Easy to apply. Super size. B-1

String Silencer - Mini-Hush dampen string noise. String Silencers stop string vibration. Takes only seconds to attach. A pair BSS

No-Glove - Positive Nocking point which gives even pressure on more of the fingers. Eliminates pinching fingers on the nock. Smooth and free release of your arrow. NOG

Nock Rites - Pliable soft rubber nock rites, eliminates the need for a glove or a tab. Gives arrow proper nocking height every time. NR

Nok-Set - Positive Nocking point non-slip. Adjusts to any bow string. Pkg. of 5. NS  
A Dealer Pkg. of 100 NS100  
Nok-Set Tool. (ONLY) NST

Portage Finger Sling - Bill Bednar's choice of all top tournament archers. S-M-L PFS

String Keeper - Fits any bow, holds bow string in place. Made of leather and adjustable elastic strap with string hook. SK

Bow Tip Protector - Keeps string in place on lower bow tip. Also protects the finish on bow tip. BTP

Bow Stringer - A Stringer made from calf hide that will mold itself to the shape of the bow tips. Adjustable for long or short bows. PAL

Proper Stringing . . . Improper bow stringing may seriously damage your bow, and you can hurt yourself - don't use the old push-pull method - play it safe - use a Bow Stringer.

Hunting Broadheads PRO-TEC-TO-TIPS - Bow Hunters Broadhead Protection - Safe - Sharp - Clean. Fits like a glove over the head. Two styles.  
1/2 Doz. 3 Blades PTT-3  
1/2 Doz. 4 Blades PTT-4

Potawatomi Bow Square - Anodized aluminum square that locates nocking point and fistmele measurements. POT

Cloth Bow Case - Heavy cotton, ties with draw strings. One size. CBC

AMERICAN Professional Bow String in a smart new plastic carry case. Custom dacron double loop with Nylon Servings. Size for every bow weight from 25# to 80# and bow length: 48-52-54-56-58-60-62-64-66-68-70 DLBS  
State weight & Bow length.

Broadhead Sharpener - Two in one design - a 4" file and special tempered wheels to give the edge. STOP GAME LOSS - USE THE SHARPENER. B.H.S.

**NEW** Best of the portable tree stands, no damage to the tree. PTS

Arrow Clips - Perfect for tackle box, arrow display racks, made of finest spring steel, nickel plate over copper and burnished. Pack of 24 clips & screws. AC-24  
Gross Pack AC-144

Bow & Arrow Rack - Easy to assemble. Holds 3 bows, and 24 arrows. KIT



Kamo Bow Cover - Easy on, easy off, a bow sock that will not interfere with bow action. KBC

**NEW** Kamo Bow Tape - Pressure sensitive - goes on easily. K.B.T.

Ferrule Type Cement - Quick stick Ferrule Cement. Dries fast. Apply with heat. FER

Fletching Cement - Superior! For Aluminum - Glass - Wood. FC

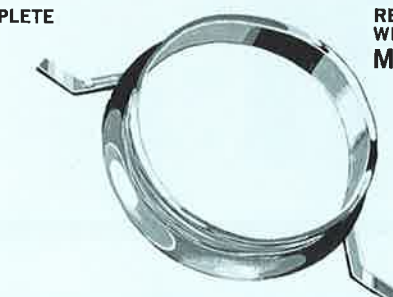
Accurate Arrow Tools - Razor sharp blades that cut 5 degree taper for broadhead or field points and 11 degree taper for nocks.  
1/16" Five degree taper TT-2  
1/32" Five degree taper TT-3  
1/16" Parallel cut TT-4

**NEWS FLASH** MORE BOW HUNTERS ARE FINDING OUT WHAT SOME KNEW ALL ALONG . . .  
**BOW FISHING IS GREAT SPORT!**

& YOU CAN OUTFIT YOURSELF FOR JUST A COUPLE OF DOLLARS



REEL COMPLETE WITH LINE MO.-6"



REEL COMPLETE WITH LINE MO.-7"

ARROWS - SOLID GLASS FLEXIBLE FLETCHING.



GFA-1

GFA-2

FISH POINTS



**NEW** STIFF DOUBLE BARB SCREW-OFF TYPE FH-1

REVERSIBLE DOUBLE BARB SCREW TYPE FH-2

Cedar Arrow Shafts Fully painted

Select Grade, spined only 1/16" or 1/32".  
Doz. # 139  
100 # 139  
1000 # 139  
Specify - 1/16" of 1/32"

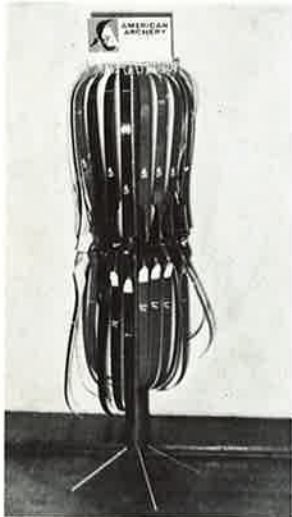
Air-Flo Die Cut Feathers Natural White and Dyed White ONLY  
Sizes: 3"-3 1/2"-4"-4 1/2"-5". Specify Color & Wing.  
Pkgs. of 100 AFDC

Amarco Nocks - Most perfect nocks made. Most popular with bow-hunters and target shooters because of the perfect fitting on glass, wood, or aluminum shafts. Seven sizes: 7/32", 9/32", 1/4", 1/64", 19/64", 5/16", 11/32".  
Dozen 100 1000 # 129

# 130 BJ Bjorn Nocks 5/16".



# DEALERS CHOICE DISPLAYS



**BR-24 Bow Rack Display**  
Easily constructed wire rack with wood vinyl pole to take bows up to 70" long. Rack holds 24 bows and takes up only 18" diameter.



**BSDR Bow String Display Rack.** With wire rack for easy handling and identification. 48 strings per rack.



**ACCR Mini Accessory Rack** - Holds essential items for the sport shop. Nine wire hooks to hold carded blister paks. Counter display or wall mounted. Hold items as arm guards, gloves, bow stringers, brush buttons, nocks, field point string silencers, and nocking points.

## AMERICAN ARCHERY COMPANY, INC.

P.O. Box 100, Industrial Park  
OCONTO FALLS, WISCONSIN 54154  
414/846-2703

We reserve the right to change specifications and prices without notice.

Please see your local authorized American dealer for fair and competitive prices on all items offered in this catalog.



### GUARANTEE

Every Bow is numbered and registered at the factory for your guaranteed protection.

This warranty does not cover twisted or warped limbs due to improper stringing. Should any failure occur in this bow within a period of 6 months from the date of purchase, American Archery Company will make free repair, or replacement if repair is not feasible, unless the bow shows evidence of misuse or improper handling, or any modification to the bow.

This warranty is transferable from one owner to another, provided bow is registered at time of purchase by the original owner.

After 6 months and up to one year from date of purchase, and provided the bow has not been misused or mishandled, repair or replacement will be made for 25% of the list purchase price.

From 1 year to 1½ years from date of purchase, the charge will be 50% of the list purchase price.

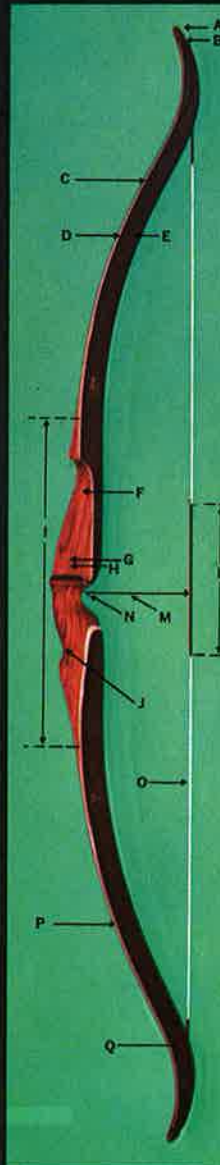
From one and one half years to 3 years, the charge will be 75% of the list purchase price. No adjustment will be made until damaged bow is returned to American Archery Company for inspection. Replacement if necessary will be made with a bow of the same model and weight, as nearly as possible. Dealers are not authorized to make adjustments, but will be glad to handle the shipping and correspondence.

### AMO BOW AND ARROW NOMENCLATURE

In February 1968, the Archery Manufacturers Organization officially adopted these AMO Manufacturing Standards for Bows, Bow Strings and Wood Arrows.

As part of this program, the nomenclature or words used to describe the many parts of a bow and an arrow were agreed on. Archers, dealers and the public have been confused by the industry's use of interchangeable words (i.e. Fistmele and String Height). By using common simple terms this confusion will be lessened.

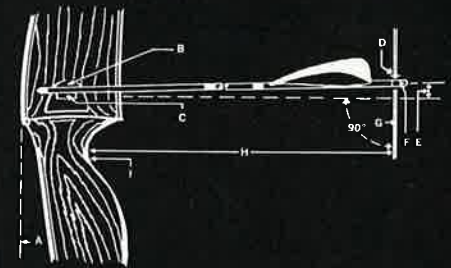
Diagram, at left, illustrates the Standard Nomenclature as approved by the Archery Manufacturers Organization and recommended by the American Archery Council.



- A—TIP
- B—STRING NOTCH
- C—UPPER LIMB
- D—BACK
- E—FACE
- F—SIGHT WINDOW
- G—ARROW REST
- H—ARROW PLATE
- I—HANDLE RISER SECTION
- J—GRIP
- L—SERVING
- M—STRING (BRACE) HEIGHT
- N—PIVOT POINT
- O—STRING
- P—LOWER LIMB
- Q—RECURVE



- A—ARROW HEAD OR POINT
- B—SHAFT
- C—CREST OR CRESTING
- D—FLETCHING
- E—INDEX FEATHER (VANE)
- F—NOCK



- A—DRAW LENGTH BOW-WEIGHT MEASURING POINT
- B—ARROW PLATE
- C—ARROW REST
- D—NOCK LOCATOR
- E—NOCKING HEIGHT
- F—NOCKING POINT
- G—STRING
- H—STRING (BRACE) HEIGHT
- I—PIVOT POINT

### AMO BOW WEIGHT STANDARD

Bow weight is the force required to draw the bow string 28" from the back of the bow at the arrow rest.

### AMO DRAW LENGTH STANDARD

Draw length is the distance, at archer's full draw, from the nocking point on the string to the back of the bow at the arrow rest.

### AMO ARROW LENGTH STANDARD

Arrow length is the distance from the bottom of the neck slot to the back of the arrow head. This standard applies to all types of arrow heads: target, field, hunting, etc.

