

PK East VFD & ESD-1 Update

Gaines Bend



Leadership

ESD-1

PK East

Danny Watkins

Palo Pinto ESD-1: Fire Chief

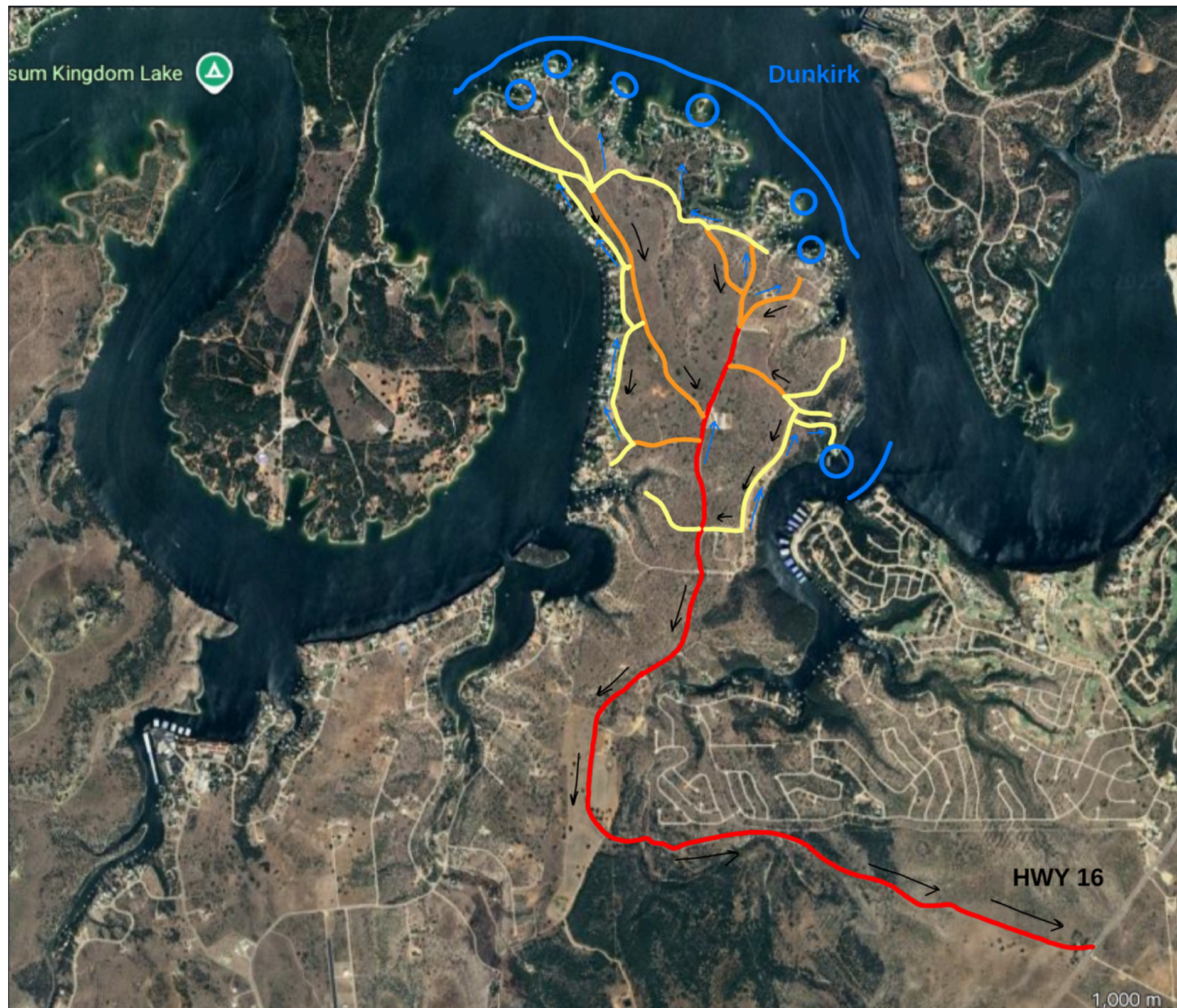
Donnie Jones

PK East VFD: Station Chief

Training and Operations

- **Led by Chief Watkins, over the last 2 years the county has undergone training and operations overhaul**
 - **All recognized agencies now operate under the same set of SOPs and SOGs drastically improving response effectiveness**
 - **Emergency service agencies of ESD-1 now embrace multi-agency response**
 - **Through Chief Watkins' knowledge and experience, departments in the county now have access to consistent and well executed training operations**
- **PK hosts and is the main training hub for live fire training - structural and urban wildland interface scenerios**

Gaines Bend Fire Emergency Info



Key Points

- Listen to emergency service personnel and/or law enforcement during emergency situations
- If you must evacuate by water & do not have a boat, find water on the N/NE shore. West shoreline is cliffs.
- Do your vacationers have access to this information?
- Emergency Information Sources:
 - FB: Palo Pinto County ESD1, Possum Kingdom East VFD
 - <https://www.facebook.com/profile.php?id=61575556586794>
 - <https://www.facebook.com/PKEVFD>

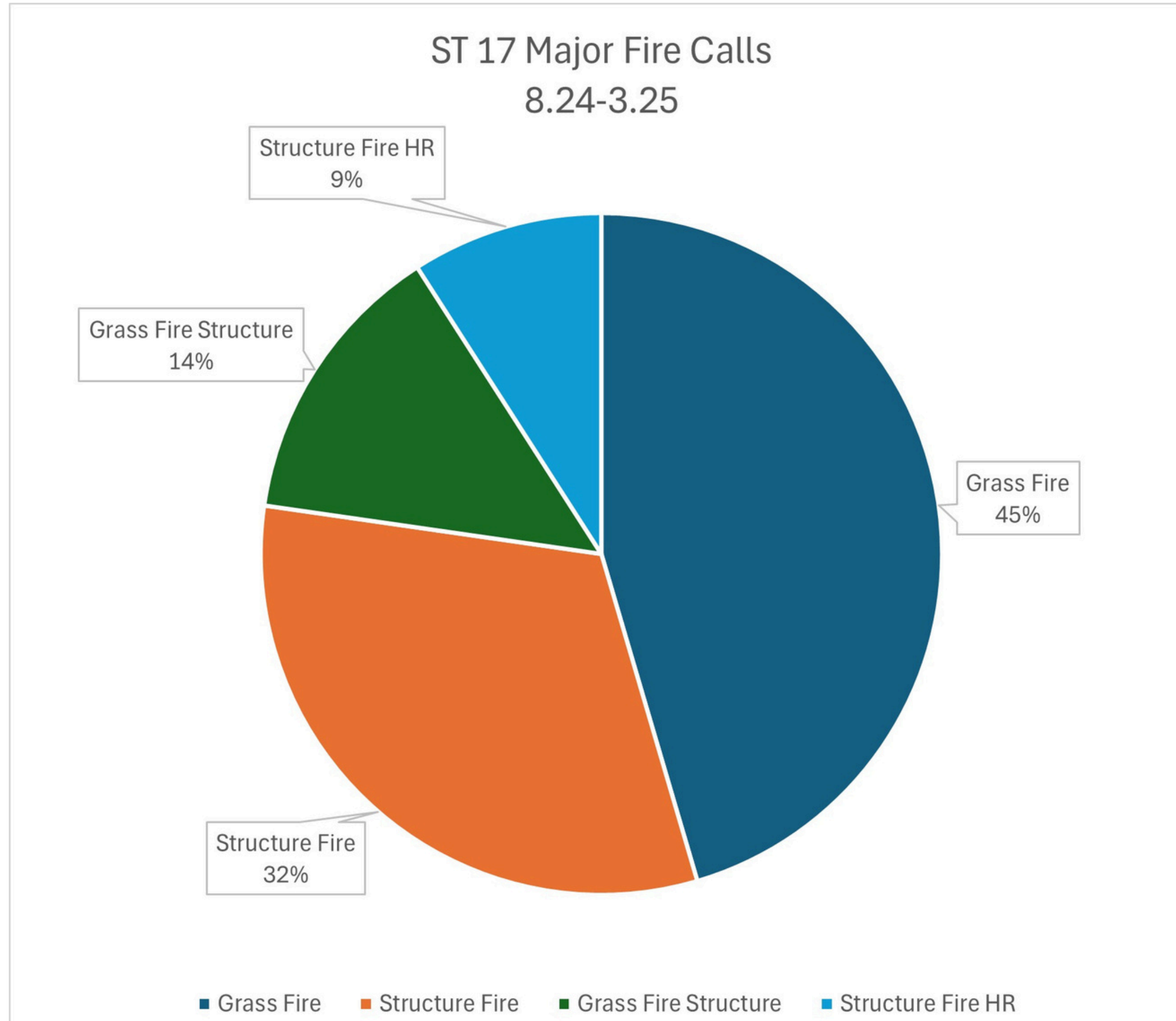
General Guidelines

- 1. Call 911 if you are in or witnessing an emergency**
- 2. Please listen to emergency service personnel**
- 3. Get us coming - meaning if you accidentally start an uncontained fire, call 911 and get us coming**

Fire Conditions

- **Predicting a high risk fire season**
 - **A lot of foliage growth over the last 2 years**
 - **PK summer population continues to rise - more people, more fires**
 - **Mixed increased activity and environmental conditions calls for higher fire potential**

PK East Call Data



Doesn't Look Too Bad



Whoaaa



Call the in-laws



What it Takes to Stop a Fire

- **2,000 - 8,000 gallons of water to extinguish a 2000 sq ft home.**
 - **At least one tender and one primary attack engine for INITIAL response..**
- **Grassfire w/ structures threatened can requires 10s of thousands of gallons and multiple agencies.**
 - **Multiple tenders, multiple engines, and multiple brush trucks.**

PK East Moving Forward

- **Tremendous progress in the last 2 years under ESD-1 leadership, Chief Watkins**
- **June 6-7: High level battalion training for complex incidents to effectively combat a large scale incident such as a fire threatening Gaines Bend**
- **Taking new volunteers. Let's go.**
- **Launching fundraiser for new tender**

PK Apparatus List

- Truck 17: Type 1 Truck w/ Ladder, 20+ years, Condition: Okay
- Engine 17: Type 3 Engine, 20+ years, Condition: Okay
- Brush 17: Brush Truck, 5+ years, Condition: Good
- Brush 17-1: Brush Truck, 25+ years, Condition: Poor
- Rescue 17: Converted Rescue, 20+ years, Condition: Good
- **Tender 17: Converted Tender (Tanker), 30+ years, Condition: Very Poor**

Truck 17

- Primary structure fire attack
- Water capacity: 500 gallons
- Immediate response calls:
Structure fire, Vehicle
accident



Engine 17

- Secondary structure fire attack, structure protection
- Water capacity: 450 gallons
- Immediate response calls: Structure fire, Grassfires w/ structures threatened, vehicle accident



Brush 17

- Grass fire primary attack
- Water capacity: 400 gallons
- Immediate response calls:
Grassfire, Grassfire w/
structures threatened



Brush 17-1

- Grass fire primary attack
- Water capacity: 400 gallons
- Immediate response calls:
Grassfire, Grassfire w/
structures threatened



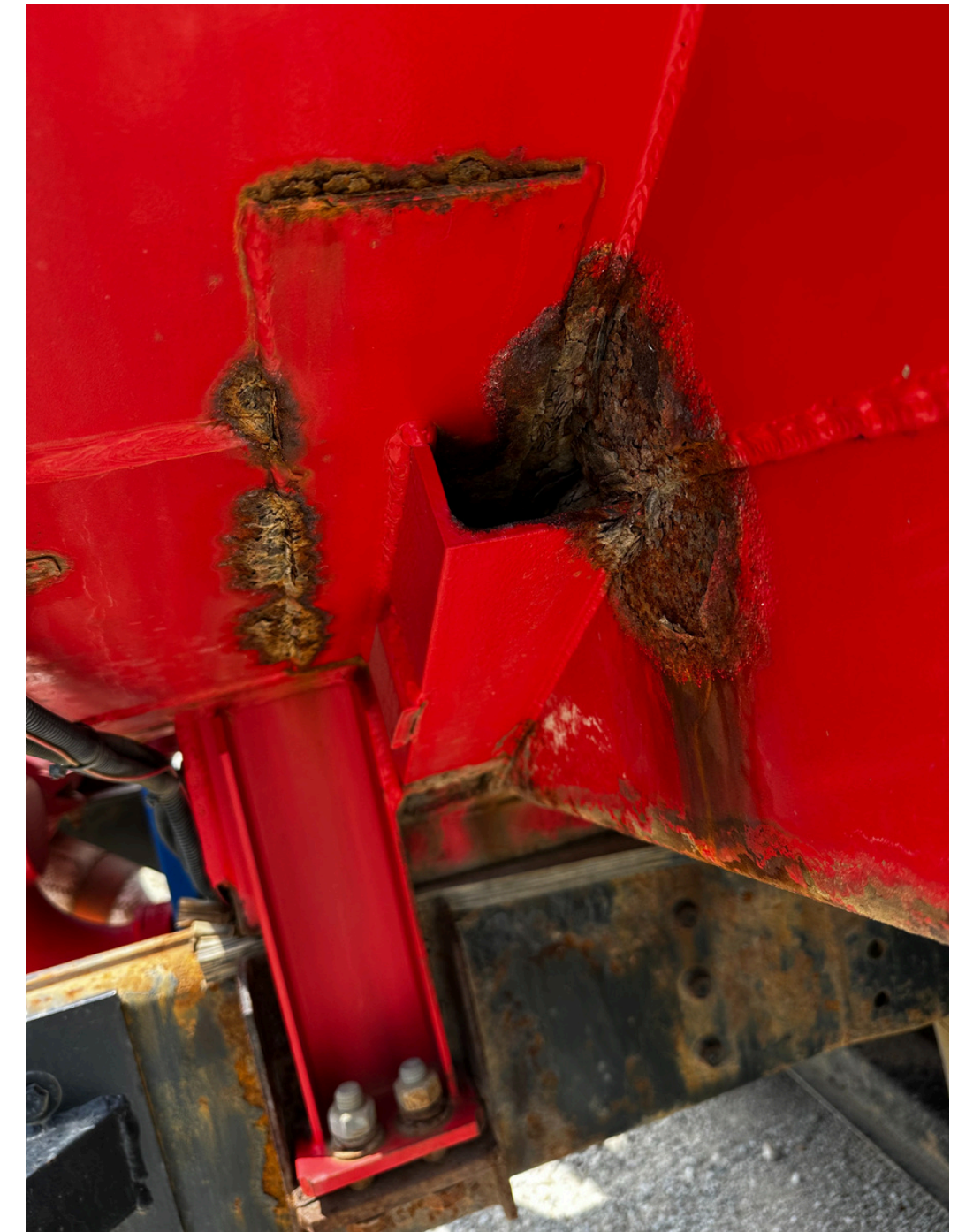
Tender 17

- Primary water supply
- Water capacity: 3000 gallons
- Immediate response calls: All fire related calls
- Absolutely necessary for all fire suppression response
- Next available tender is an additional 30 minutes



Tender 17 Downfalls

- 30+ years old
- Tank Deterioration
- Increasing maintenance
- Requires high skilled driver
- 400 GPM pump limit
- Inadequate performance



Proposition for New Tinder

Type: Pumper Tender

Benefits:

- **Acts as both engine & tender**
- **Can serve as primary fire attack w/ 3000 gallons onboard**
- **Provides significant advantage for initial fire attack**
- **Swiss army knife (engine & tender serving as the most important & versatile apparatus)**
- ***Major impact on ISO ratings***



The Raise

- **Amount: \$300k**
- **What For: Pumper Tinder**
- **Who For: PK East VFD serving the greater PK East district**
- **How: Multiple large community targeted donations**
- **Incentive: Effective fire suppression**
- **Separate fundraiser from our yearly functions**

Thank You