

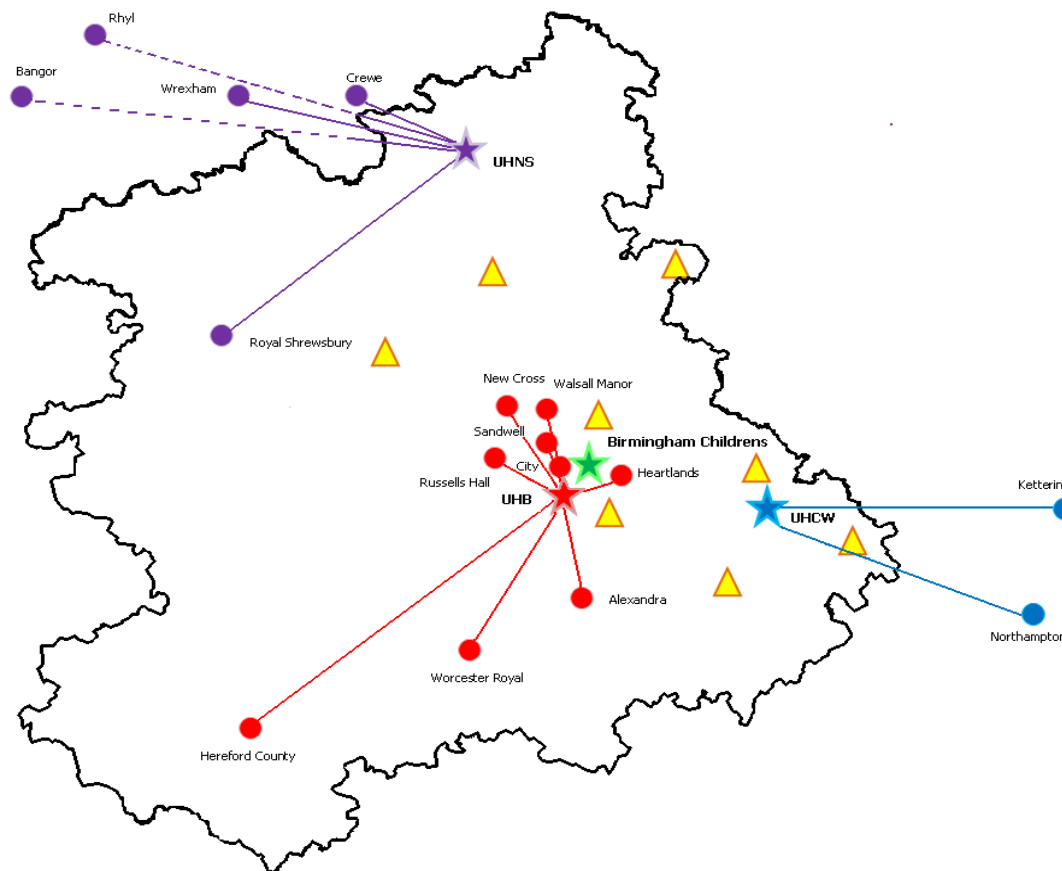


## West Midlands Ambulance Service Major Trauma Report 2015/16

May-15

### Page

- #1 Index
- #2 Total triage tool activations
- #3 Step 1 analysis
- #4 Step 2 analysis
- #5 Step 3 analysis
- #6 Step 4 analysis
- #7 Triage tool activations summary \*
- #8 Daily tool activations
- #9 Activity against contract - weekly and monthly figures \*
- #10 Activity against contract - chart \*
- #11 Activity trends\*
- #12 Conveyance charts \*
- #13 Average time distributions by division
- #14 Average conveyance times by destination
- #15 Map - Activity by postcode area \*
- #16 Map - Activity by postcode area and shift \*
- #17 Map - Incident location by type of incident \*
- #18 Map - Incident location by destination \*
- #19 Deceased patients \*
- #20 Out of area activity \*
- #21 Transfers \*
- #22-31 MERIT Report



**Please note:** (please refer to individual page notes where applicable)

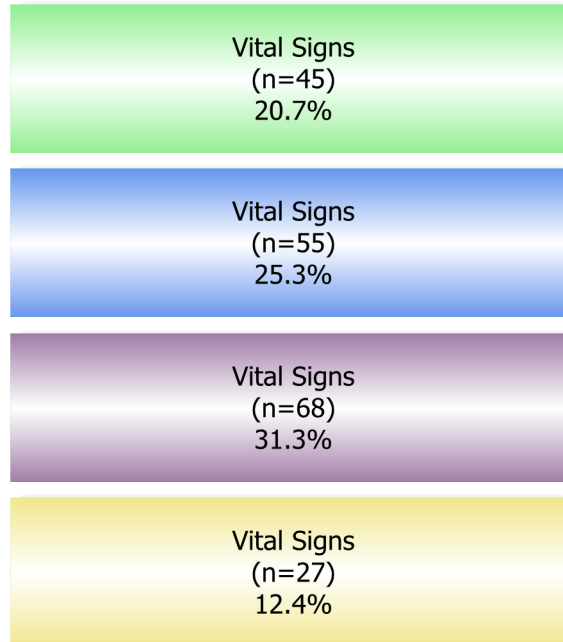
1: Information correct on 1st June 2015

\* - Year to date figures are provided for these reports



Deceased patients and cases where crew discretion has triggered the tool will appear in the total figures but not within one of the Steps 1 – 4.

**Total Triage Tool Triggers  
(n=217)**



Trauma Injury Type	Count
RTC	106
Falls	48
Assault	6
Stabbing	24
Burns	8
Industrial Injury	5
Leisure Activity	7
Other	5
Other Transport Collision	4
Agricultural Accident	2
Unknown	1
Shooting	1
<b>Total:</b>	<b>217</b>



**Step 1  
Vital Signs  
(n=45)**

Respiratory Rate <10 or >29 / min  
(n=8)  
17.8%

Systolic Blood Pressure <90 mmHg  
(n=7)  
15.6%

Glasgow Coma Scale <14  
(n=30)  
66.7%

Trauma Injury Type	Count
Falls	14
Assault	3
RTC	18
Stabbing	2
Industrial Injury	3
Burns	1
Other Transport Collision	1
Unknown	1
Other	2
<b>Total:</b>	<b>45</b>



**Step 2**  
**Anatomy of Injury**  
**(n=55)**

Penetrating to Neck/ Chest/ Abdomen (n=21) 38.2%
Suspected Fractured Pelvis (n=19) 34.5%
2 or more Long Bone Fractures (n=6) 10.9%
Crushed/ De-gloved /Mangled Extremity (n=3) 5.5%
Amputation Proximal to Wrist/Ankle (n=1) 1.8%
Open or Depressed Skull Fracture (n=3) 5.5%
Sensory or Motor Deficit (now onset) (n=2) 3.6%

Trauma Injury Type	Count
RTC	17
Stabbing	18
Falls	8
Leisure Activity	4
Assault	3
Agricultural Accident	1
Industrial Injury	1
Other	2
Other Transport Collision	1
<b>Total:</b>	<b>55</b>



**Step 3**  
**Mechanism of Injury**  
**(n=68)**

Fall > 6m / 2 storeys in Adult  
(n=9)  
13.2%

Fall > 3m / 2x height of Child  
(n=3)  
4.4%

Vehicle - Ejection (partial or complete)  
(n=2)  
2.9%

Vehicle - Intrusion >30cm at Patient Site  
(n=16)  
23.5%

Vehicle - Death in same Compartment  
(n=0)  
0.0%

Motorcycle Crash > 20 mph  
(n=15)  
22.1%

Pedestrian / Bicyclist vs Motor Vehicle  
thrown/run over/ significant Impact  
(n=17) 25.0%

Entrapment  
(n=6)  
8.8%

Trauma Injury Type	Count
RTC	56
Falls	11
Leisure Activity	1
<b>Total:</b>	<b>68</b>



**Step 4  
Special Conditions  
(n=27)**

Age > 55 (n=17) 63.0%
Children < 8 years old (n=2) 7.4%
Pregnancy > 20 weeks (n=0) 0.0%
Renal Dialysis Patients (n=0) 0.0%
Bleeding Disorders / Anticoagulants (n=2) 7.4%
Time Critical Extremity Injury (n=0) 0.0%
Burns: Circumferential or 20% (BSA) (n=3) 11.1%
Specialist Trauma Pathway (n=3) 11.1%

Trauma Injury Type	Count
Burns	5
RTC	5
Falls	13
Industrial Injury	1
Other	1
Agricultural Accident	1
Stabbing	1
<b>Total:</b>	<b>27</b>



Deceased patients and cases where crew discretion has triggered the tool will appear in the total figures but not within one of the Steps 1 – 4

Total Triggers	
Step 1: Vital Signs	89
Step 2: Anatomy of Injury	96
Step 3: Mechanism of Injury	137
Step 4: Special Conditions	64
Crew Discretion	8
Injuries Incompatible With Life – Deceased	28
<b>Total</b>	<b>422</b>

Trauma Type	
RTC	199
Falls	115
Stabbing	40
Burns	16
Leisure Activity	11
Other	9
Industrial Injury	8
Other Transport Collision	8
Assault	7
Unknown	5
Shooting	2
Agricultural Accident	2
<b>Total</b>	<b>422</b>

Step 1 Breakdown	
Glasgow Coma Scale <14	63
Respiratory Rate <10 or >29 / min	15
Systolic Blood Pressure <90 mmHg	11
<b>Total</b>	<b>89</b>

Step 2 Breakdown	
Penetrating to Neck/ Chest/ Abdomen	35
Suspected Fractured Pelvis	31
2 or more Long Bone Fractures	13
Sensory or Motor Deficit (now onset)	8
Open or Depressed Skull Fracture	5
Crushed/ De-gloved /Mangled Extremity	3
Amputation Proximal to Wrist/Ankle	1
<b>Total</b>	<b>96</b>

Step 3 Breakdown	
Pedestrian / Bicyclist vs Motor Vehicle thrown/run over/ significant Impact	49
Motorcycle Crash > 20 mph	29
Vehicle - Intrusion >30cm at Patient Site	20
Fall > 6m / 2 storeys in Adult	16
Fall > 3m / 2x height of Child	12
Entrapment	7
Vehicle - Ejection (partial or complete)	4
<b>Total</b>	<b>137</b>

Step 4 Breakdown	
Age> 55	42
Burns: Circumferential or 20% (BSA)	10
Children < 8 years old	6
Specialist Trauma Pathway	3
Bleeding Disorders / Anticoagulants	2
Time Critical Extremity Injury	1
<b>Total</b>	<b>64</b>

Step 1 - Trauma Type	
RTC	34
Falls	32
Industrial Injury	6
Assault	4
Other	4
Unknown	3
Stabbing	2
Leisure Activity	1
Shooting	1
Burns	1
Other Transport Collision	1
<b>Total</b>	<b>89</b>

Step 2 - Trauma Type	
Stabbing	32
RTC	30
Falls	19
Leisure Activity	5
Assault	3
Other Transport Collision	2
Other	2
Unknown	1
Agricultural Accident	1
Industrial Injury	1
<b>Total</b>	<b>96</b>

Step 3 - Trauma Type	
RTC	107
Falls	27
Stabbing	1
Other Transport Collision	1
Leisure Activity	1
<b>Total</b>	<b>137</b>

Step 4 - Trauma Type	
Falls	33
Burns	13
RTC	9
Other	3
Leisure Activity	2
Unknown	1
Industrial Injury	1
Agricultural Accident	1
Stabbing	1
<b>Total</b>	<b>64</b>

This data does not include cases where the crews are not contacting the Regional Trauma Desk, any trauma transfers or cases which are responded to by out of area resources.



Date	No. of Tool Activations	Non-Conveyances	Cases That By Passed Their Nearest Hospital	No. of Patients Seen by Specialist Resources				Patient Initially Transported To:					Major Trauma Centre			
				Air Amb	Day Air Amb / ECT / MERIT	Night Air Amb / ECT / MERIT	Voluntary BASICS / MARS etc	MTC	Trauma Unit	LEH	Out of Area	Not Transported	UHB	BCH	RSUH	UHCW
01/05/2015	8	0	4	2		3	1	6	2					1		5
02/05/2015	4	1	2	2	2	1		3				1	1			2
03/05/2015	6	1	2		1			3	2			1	2	1		
04/05/2015	3	0	2		1			3					1	1	1	
05/05/2015	8	2	4	4	3			4	2			2	3		1	
06/05/2015	7	0	3	4		1		6	1				3		1	2
07/05/2015	3	0	2			1		3					3			
08/05/2015	3	0	3		1			3					1	1	1	
09/05/2015	4	0	1	1			3	4					1		3	
10/05/2015	4	0	2					2	2				2			
11/05/2015	3	0	1						3							
12/05/2015	5	0	4		1	2		3	2				2		1	
13/05/2015	6	0	4	1	1			6					4		1	1
14/05/2015	9	2	4	1	1		1	4	3			2	3			1
15/05/2015	14	1	8		3		4	7	6			1	1	2	3	1
16/05/2015	8	0	3	1		2	1	6	2				5			1
17/05/2015	11	1	6		2	3	1	6	4			1	4		2	
18/05/2015	6	1	1	2				3	2			1	1			2
19/05/2015	3	0	0	1				2	1				1			1
20/05/2015	4	0	3					3	1				1	1	1	
21/05/2015	12	1	6	1	7	1		8	2	1		1	3		1	4
22/05/2015	10	0	5			1	1	7	2	1			2		4	1
23/05/2015	10	0	5	1		2		8	2				6			2
24/05/2015	11	0	9	4	3	1	3	7	3		1		4	1	1	1
25/05/2015	9	1	4	1		1	1	6	2			1	3		3	
26/05/2015	2	0	0			1		1	1				1			
27/05/2015	13	0	9	3	1	6	2	11	2				6	2	2	1
28/05/2015	3	0	1						2	1						
29/05/2015	14	1	7	2		2		8	5			1	5			3
30/05/2015	3	1	1	2	1			2				1	2			
31/05/2015	11	0	9		1	1	3	9	2				6	2	1	
<b>Total</b>	<b>217</b>	<b>13</b>	<b>115</b>	<b>33</b>	<b>29</b>	<b>29</b>	<b>21</b>	<b>144</b>	<b>56</b>	<b>3</b>	<b>1</b>	<b>13</b>	<b>77</b>	<b>12</b>	<b>27</b>	<b>28</b>

This data does not include cases where the crews are not contacting the Regional Trauma Desk, any trauma transfers or cases which are responded to by out of area resources. **Report Ref: 184**



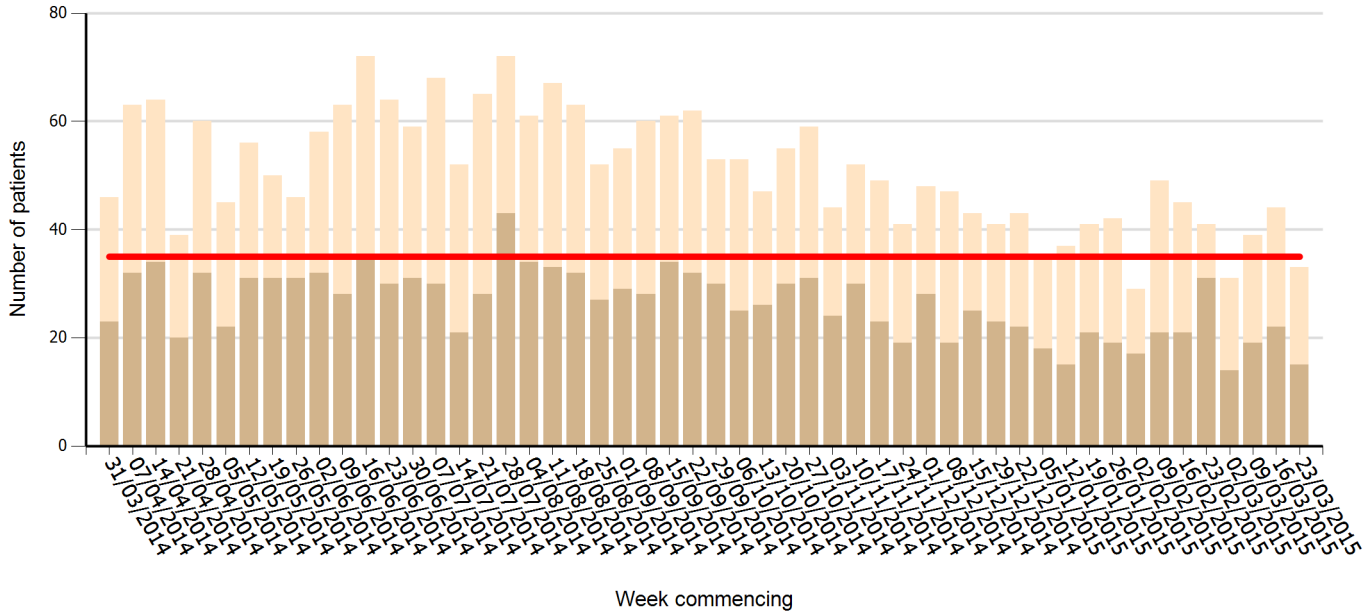


A	B	C	D	E
Week Commencing	No. of triage tool +ve patients	Non-Conveyances	Total no. of cases within Column B that were that MTCs natural DGH catchment (therefore not new activity shifts)	Additional triage tool +ve patients that transferred within their major trauma catchment population (i.e. that bypassed their nearest hospitals)
30/03/2015	39	3	20	16
06/04/2015	45	2	24	19
13/04/2015	49	3	23	23
20/04/2015	53	3	19	31
27/04/2015	46	6	17	23
04/05/2015	32	2	13	17
11/05/2015	56	4	22	30
25/05/2015	55	3	21	31
18/05/2015	56	2	25	29
<b>Overall Total</b>	<b>431</b>	<b>28</b>	<b>184</b>	<b>219</b>

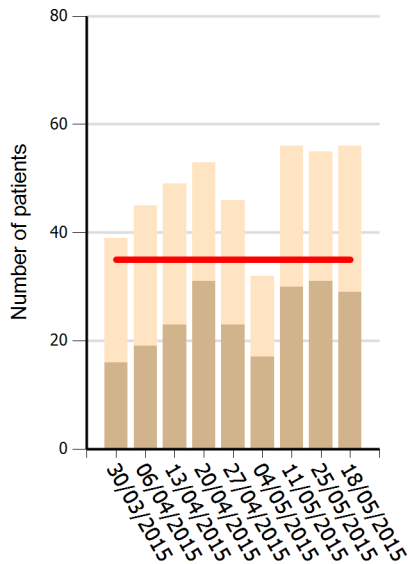
A	B	C	D	E
Month	No. of triage tool +ve patients	Non-Conveyances	Total no. of cases within Column B that were that MTCs natural DGH catchment (therefore not new activity shifts)	Additional triage tool +ve patients that transferred within their major trauma catchment population (i.e. that bypassed their nearest hospitals)
April	205	15	90	100
May	217	13	89	115
<b>Overall Total</b>	<b>422</b>	<b>28</b>	<b>179</b>	<b>215</b>



### Weekly Activity against Contract: 2014/15



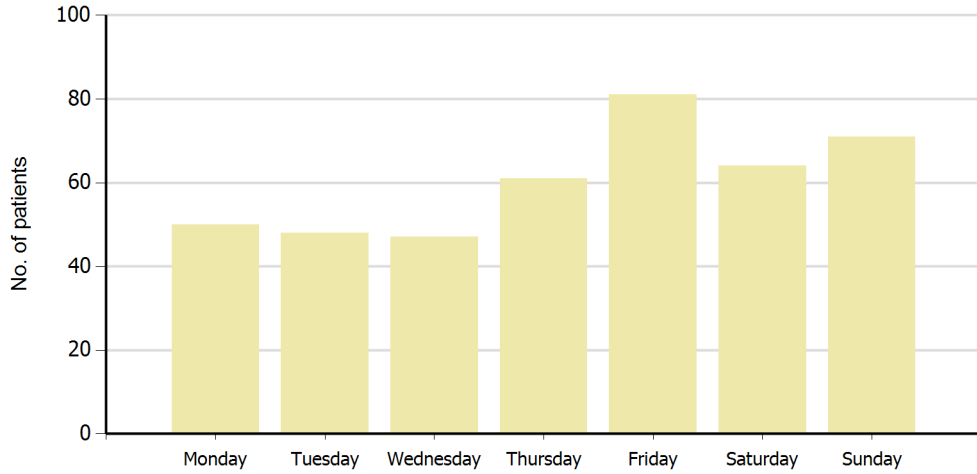
### Weekly Activity against Contract: 2015/16



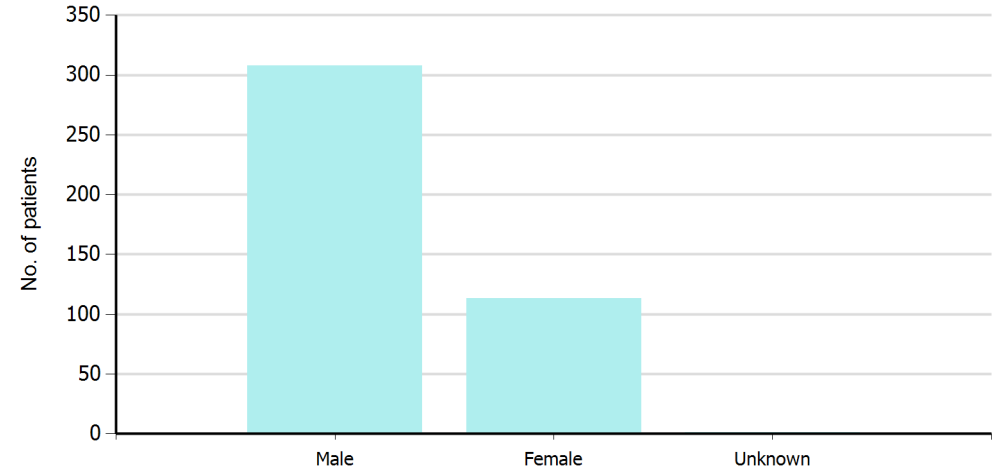
- █ Weekly Contract (relates to 5 cases per day where the triage tool is triggered and the ambulance is required to bypass a hospital in order to reach the...)
- █ Total Activity: Total number of triage triggers
- █ Contract Activity: Triage tool triggers where we had to bypass the hospital in order to reach the Major Trauma Centre



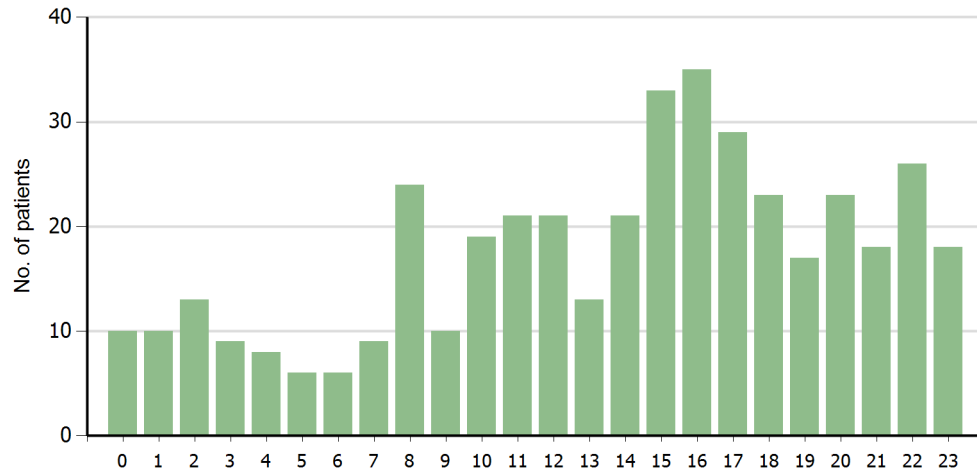
**Activity (total) by Day of Week**



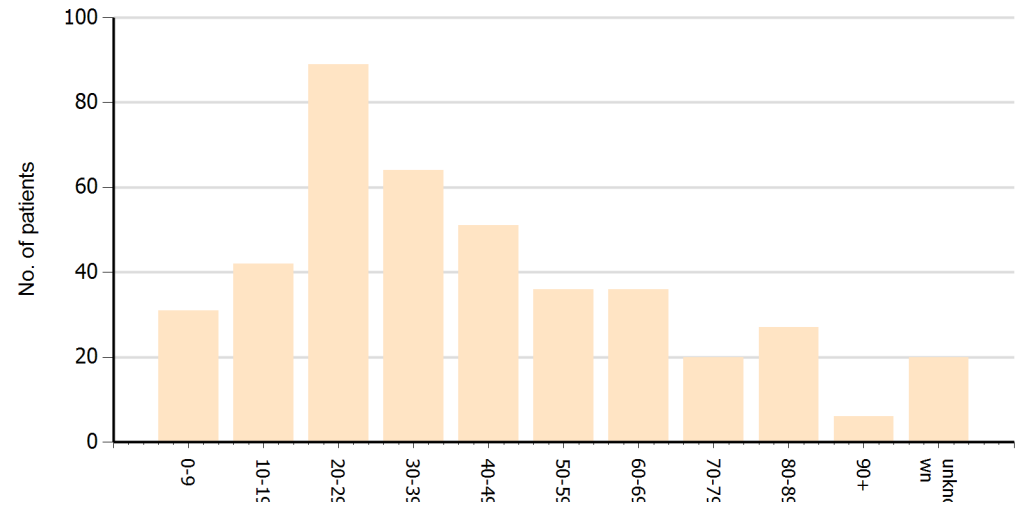
**Activity (total) by Patient's Gender**



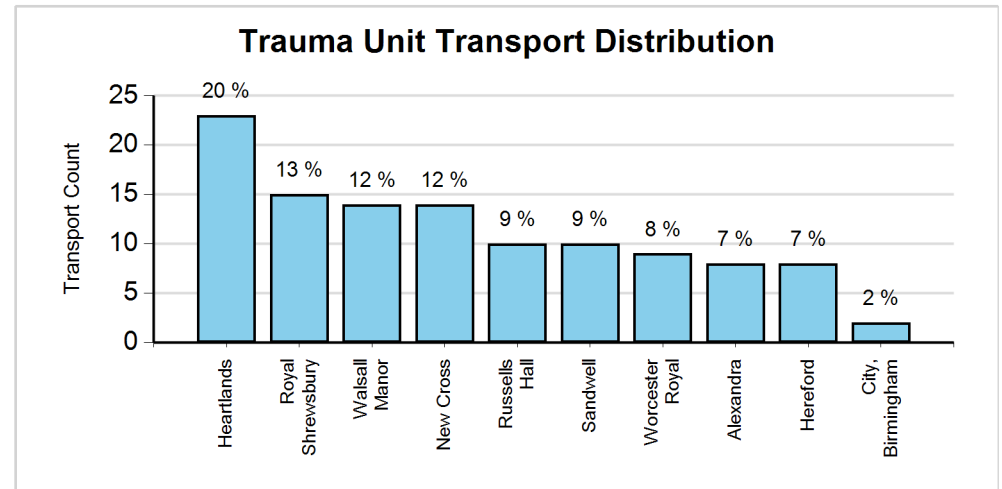
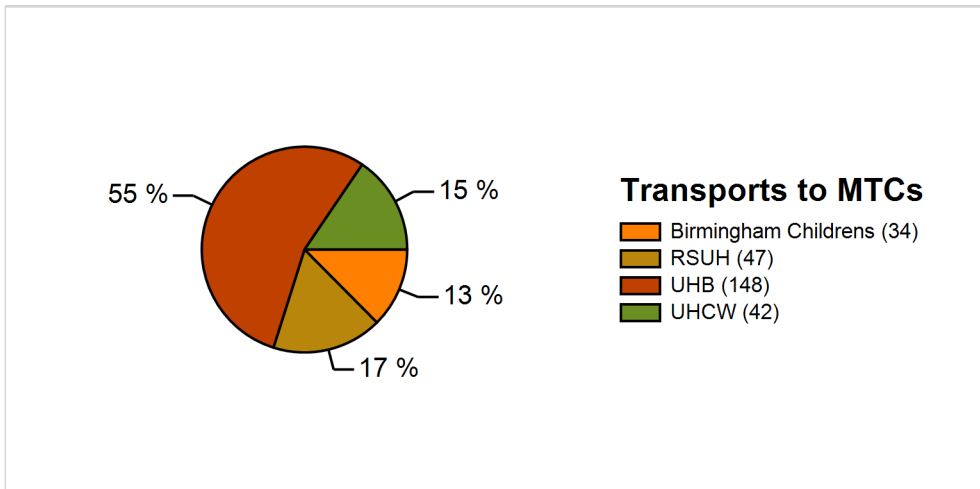
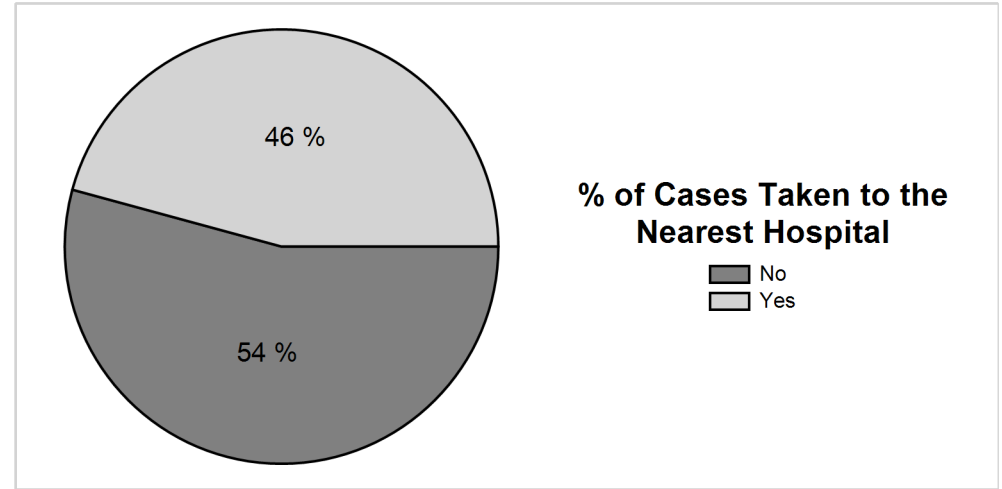
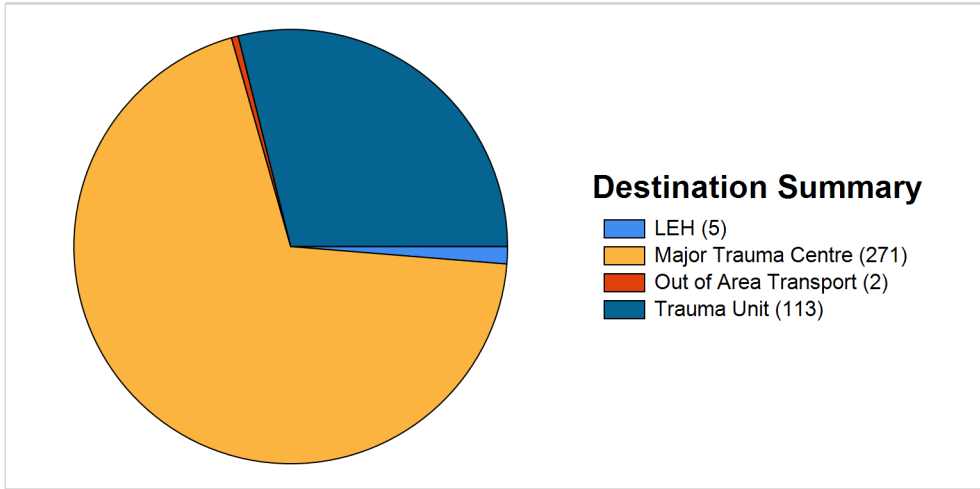
**Activity (total) by Hour of Day**



**Activity (total) by Patient Age**



This data does not include cases where the crews are not contacting the Regional Trauma Desk, any trauma transfers or cases which are responded to by out of area resources.



This data does not include cases where the crews are not contacting the Regional Trauma Desk, any trauma transfers or cases which are responded to by out of area resources.



**Average Time Mobile to At Scene (hh:mm:ss)**

Incident based. First mobile time to first on scene

LAND Crews only			AIR Crews only		
Division	Day	Night	Division	day	night
Birmingham Division	0:05:43	0:05:42	Birmingham Division	0:11:55	
Black Country Division	0:04:58	0:04:46	Black Country Division	0:11:33	0:19:00
C&W Division	0:08:56	0:06:37	C&W Division	0:08:32	
Staffordshire Division	0:06:16	0:05:49	Staffordshire Division	0:11:43	
West Mercia Division	0:07:02	0:06:52	West Mercia Division	0:12:49	
<b>Total</b>	<b>0:06:38</b>	<b>0:05:53</b>	<b>Total</b>	<b>0:11:39</b>	<b>0:19:00</b>

**Average Time Spent on Scene (hh:mm:ss)**

Incident based. First on scene to first left scene (where subsequently conveyed)  
Ambulances and Air Crews only. Entrapments and RSI on scene excluded (where known).

ALL Crews		
Division	day	night
Birmingham Division	0:29:50	0:30:41
Black Country Division	0:45:35	0:37:51
C&W Division	0:35:40	0:51:03
Staffordshire Division	0:44:40	0:39:41
West Mercia Division	0:50:54	0:42:40
<b>Total</b>	<b>0:41:50</b>	<b>0:37:21</b>

**Average Travel Time to Hospital (hh:mm:ss)**

Response based. Time left scene to time at hospital

LAND Crews only			AIR Crews only	
Division	day	night	Division	day
Birmingham Division	0:12:31	0:13:28	Black Country Division	0:08:02
Black Country Division	0:16:58	0:15:11	C&W Division	0:08:49
C&W Division	0:18:37	0:18:48	Staffordshire Division	0:17:21
Staffordshire Division	0:24:19	0:26:34	West Mercia Division	0:13:46
West Mercia Division	0:26:22	0:29:33	<b>Total</b>	<b>0:12:38</b>
<b>Total</b>	<b>0:19:48</b>	<b>0:19:38</b>		

**Average Total Time spent on Cases (hh:mm:ss)**

Incident based. First allocated time to latest time clear

ALL Crews		
Division	day	night
Birmingham Division	1:23:12	1:31:08
Black Country Division	1:48:16	1:41:55
C&W Division	1:46:22	2:11:37
Staffordshire Division	1:58:00	1:54:35
West Mercia Division	2:00:16	2:06:22
<b>Total</b>	<b>1:47:37</b>	<b>1:47:08</b>

This data does not include cases where the crews are not contacting the Regional Trauma Desk, any trauma transfers or cases which are responded to by out of area resources. The 'division' is based on the location of incident. Excluding defib responses



**Average Travel Time to Hospital (hh:mm:ss)**

Response based. Time left scene to time at hospital

LAND Crews only	MTCs	
Hospital Attended	day	night
Birmingham Childrens	0:13:18	0:31:43
UHB	0:18:00	0:19:06
UHCW	0:18:02	0:18:35
<b>Total</b>	<b>0:17:12</b>	<b>0:20:04</b>

AIR Crews only	MTCs
Hospital Attended	day
UHB	0:12:48
UHCW	0:14:05
<b>Total</b>	<b>0:13:29</b>

LAND Crews only	Other Destinations	
Hospital Attended	day	night
Alexandra	0:19:28	
Burton		0:27:42
City (Birmingham)	0:13:45	
County Hospital (Stafford)	0:25:23	0:06:49
Good Hope	0:18:26	
Heartlands	0:15:56	0:14:22
Hereford County	0:19:19	0:20:23
New Cross	0:18:17	0:05:21
Princess Royal	0:17:23	0:13:34
Royal Shrewsbury	0:25:02	0:26:11
Royal Stoke Univ Hosp	0:24:15	0:26:59
Russells Hall	0:19:05	0:10:31
Sandwell	0:08:13	0:04:00
Walsall Manor	0:26:11	0:29:17
Warwick	0:20:40	0:21:03
Worcestershire Royal	0:31:48	0:11:45
<b>Total</b>	<b>0:21:19</b>	<b>0:18:50</b>

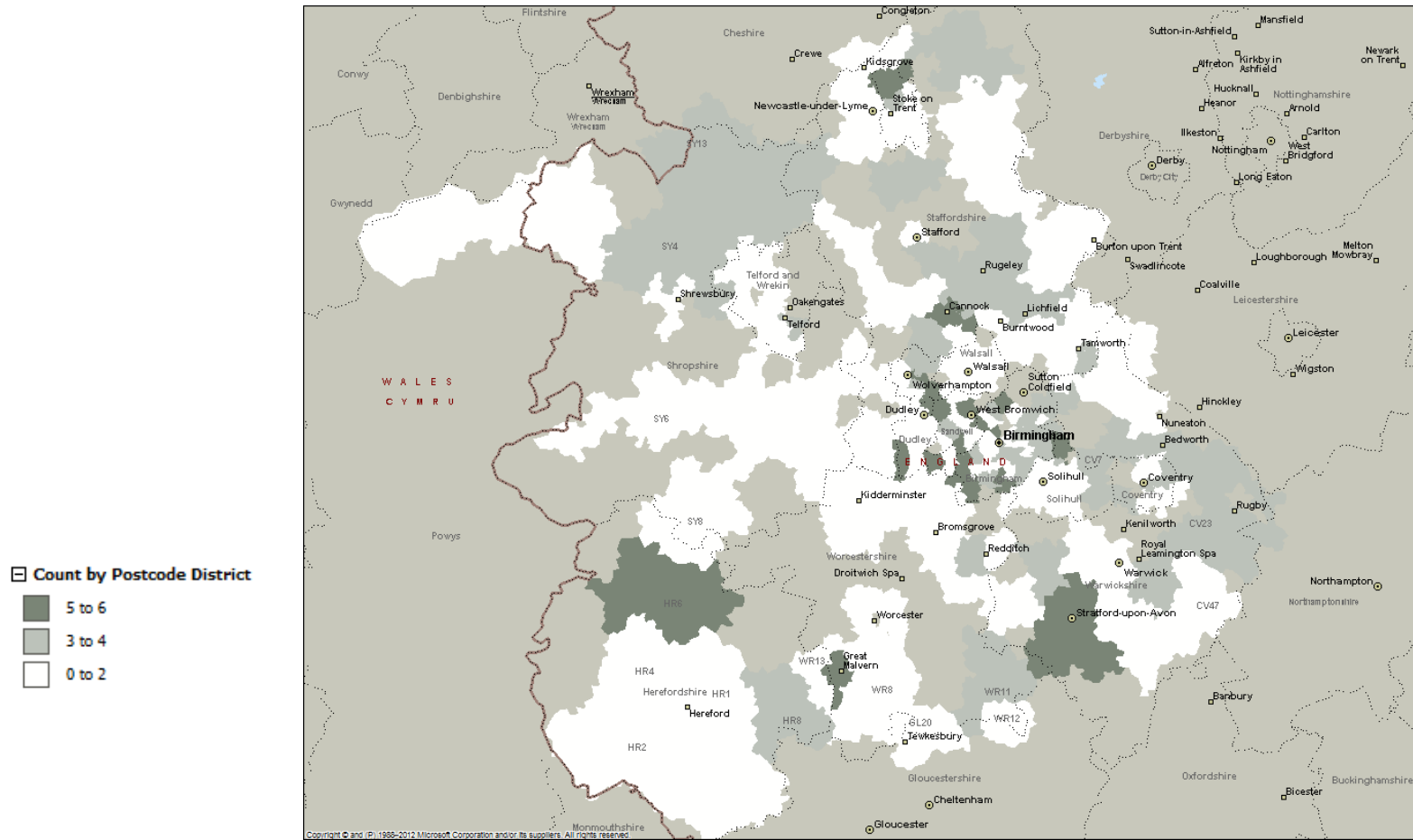
AIR Crews only	Other Destinations
Hospital Attended	day
Royal Stoke Univ Hosp	0:10:09
Unspecified Hospital	0:16:26
<b>Total</b>	<b>0:10:50</b>

This data does not include cases where the crews are not contacting the Regional Trauma Desk, any trauma transfers or cases which are responded to by out of area resources. Excluding defib responses



## Major Trauma Activity by Postcode Area

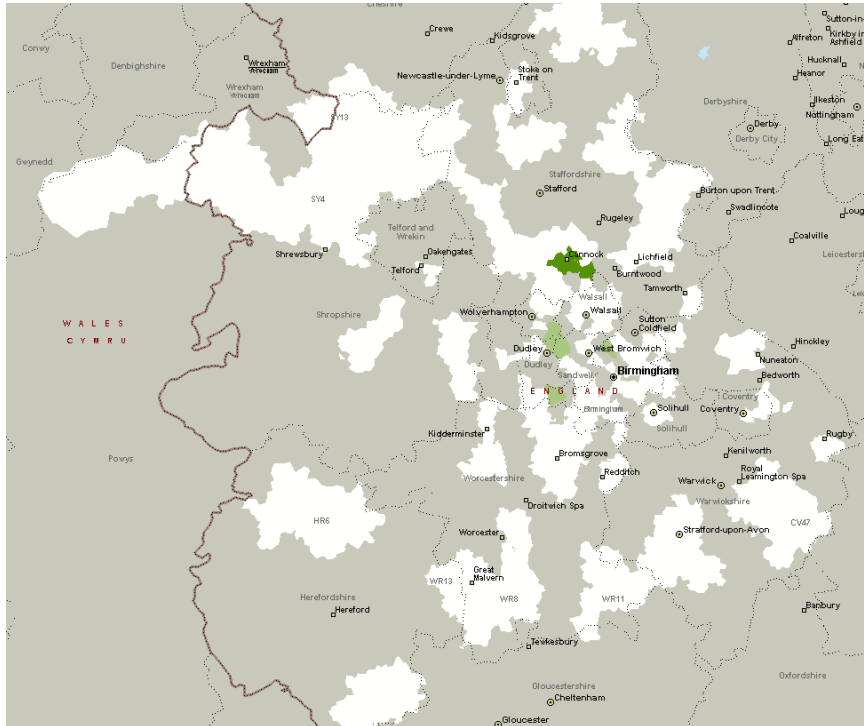
April to May 2015



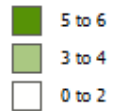
# Major Trauma Activity by Postcode Area and Shift

April to May 2015

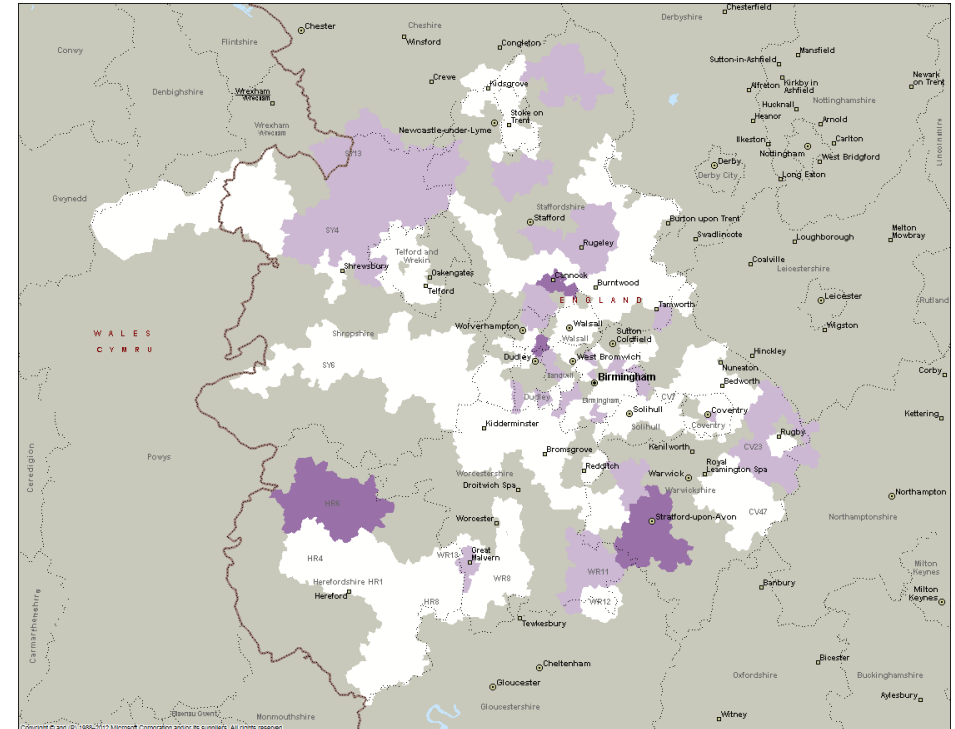
## DAY Shift (07:00 – 18:59)



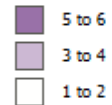
### Count by Postcode District



## NIGHT Shift (19:00 – 06:59)

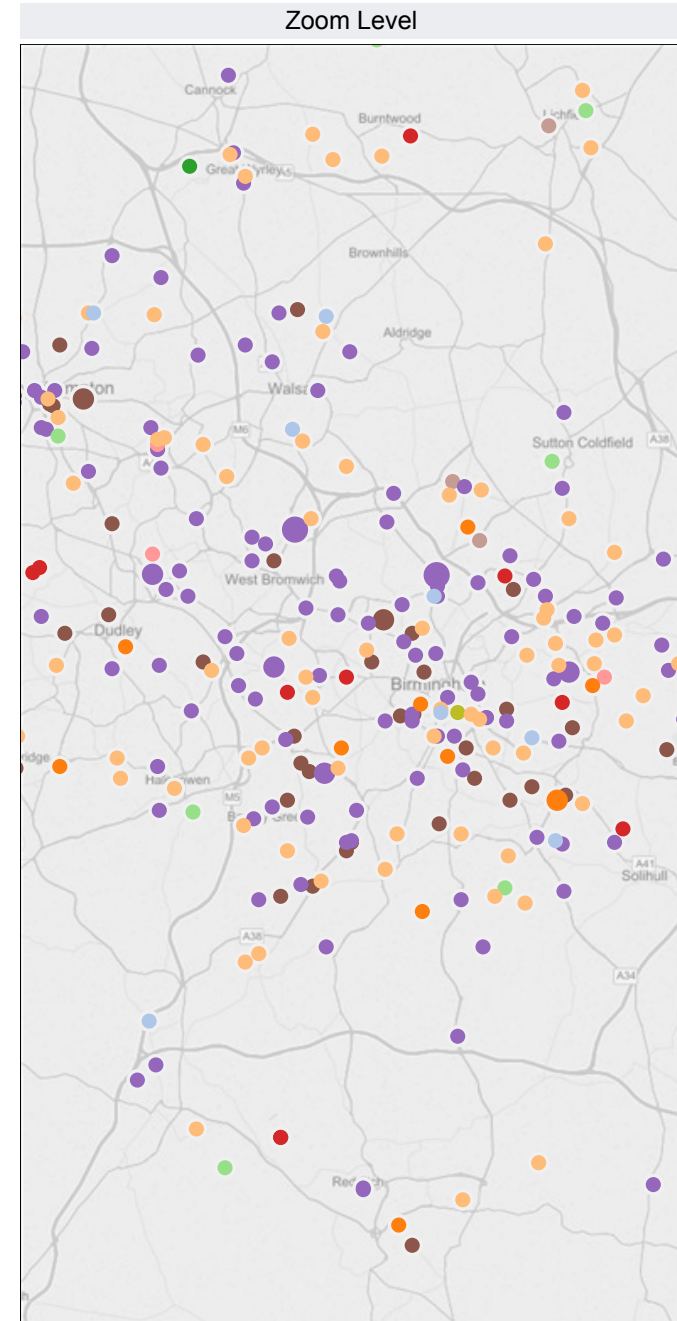
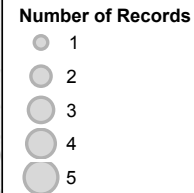
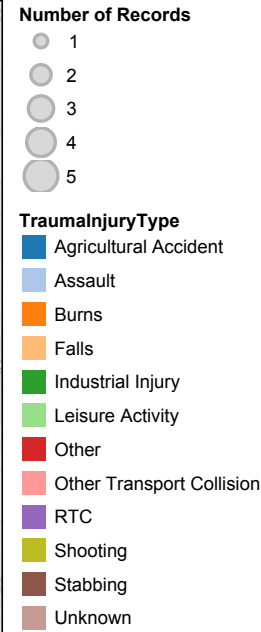
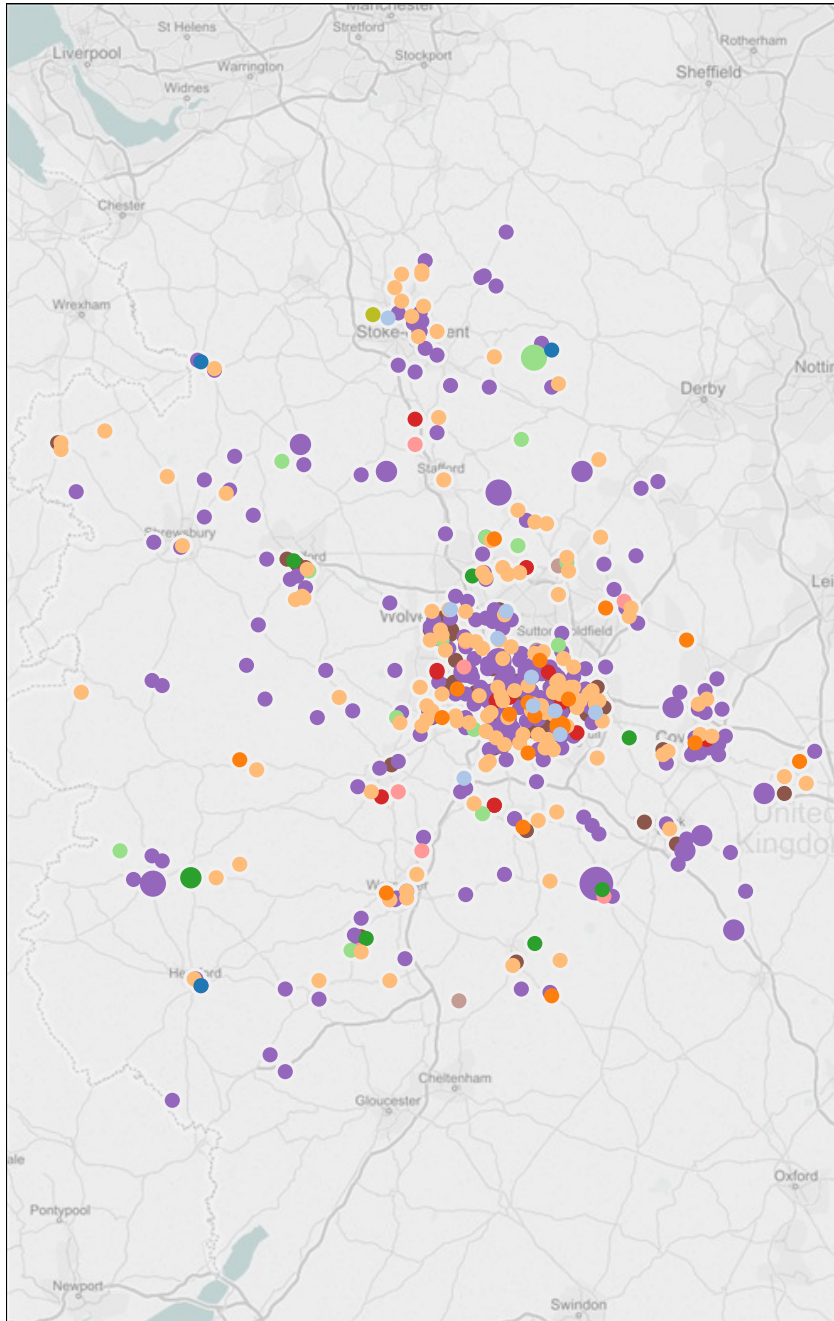


### Count by Postcode District



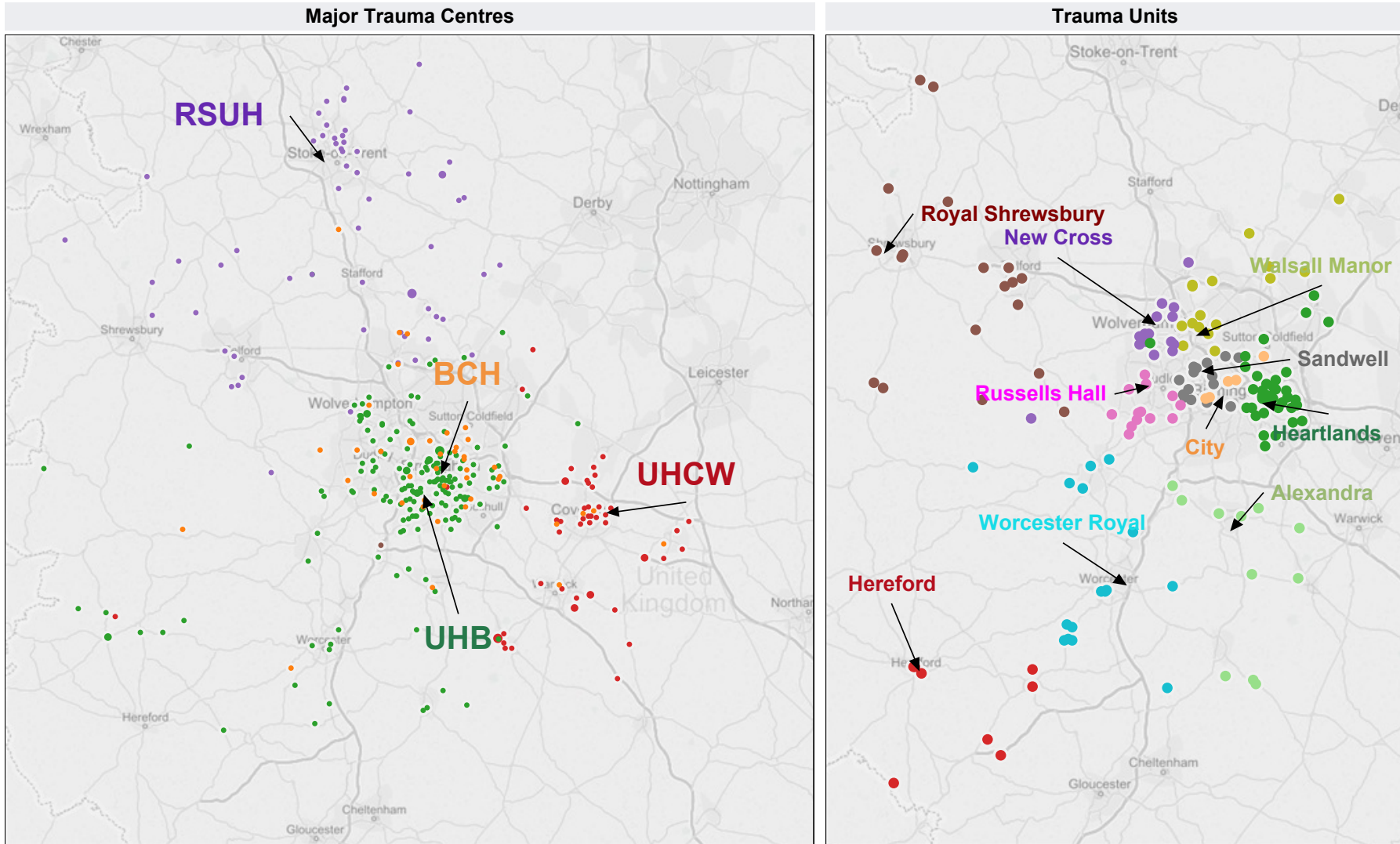


# Incident Location of Major Trauma Patients by Type of Incident 2015/16



This data does not include cases where the crews are not contacting the Regional Trauma Desk, any trauma transfers or cases which are responded to by out of area resources.

# Incident Location of Patients Conveyed to MTCs and TUs 2015/16



**Number of Records**  
 • 1      • 3

**Number of Records**  
 • 1      • 2

**Major Trauma Centre**  
 ■ Birmingham Childrens      ■ UHCW  
 ■ Not MTC  
 ■ RSUH  
 ■ UHB

**Trauma Unit**  
 ■ Alexandra      ■ New Cross      ■ Walsall Manor  
 ■ City, Birmingham      ■ Royal Shrewsbury      ■ Worcester Royal  
 ■ Heartlands      ■ Russells Hall  
 ■ Hereford      ■ Sandwell

This data does not include cases where the crews are not contacting the Regional Trauma Desk, any trauma transfers or cases which are responded to by out of area resources.



	April	May	June	July	August	September	October	November	December	January	February	March	No Value	YTD
<b>No. of deceased patients</b>	16	16												<b>32</b>

<b>Trauma Injury Type</b>	<b>General Area</b>	<b>Deceased Notes</b>
Stabbing	Handsworth	pt had recieved multiple stab wounds to torso 1 of 2 pts Thoracotomy on scene. pronounced life extinct.
RTC	Henley in Arden	
Shooting	Bignall End, Stoke -on - Trent	Pt shot himself in the stomach with a Shotgun. Two entry wounds, no exit wounds and minimal blood loss but organs disintegrated. Pt was asystolic on arrival
Other Transport Collision	MALVERN	PT HIT BY TRAIN
RTC	Leominster	
Burns	Kingstanding	Pt was extricated by fire from a house fire and cpr given by fire and o/a of Amb pt in cardiac arrest
RTC	Eardisland, Leominster	single vehicle RTC, car overturned and in hedge. Crew state massive haemorrhage on scene. ROLE @08.59 pr crew.
RTC	Bilston	ASO states pt is deceased - massive neck trauma - asystolic - multiple upper chest inj
Other Transport Collision	Stone	Female Pt hit by train- deceased. baby found nearby safe and well uninjured
RTC	SANDWELL	RTC Traumatic cardiac arrest passenger of car vs van
Stabbing	Warwick	?Events ?assault ?DSH
RTC	HINSTOCK	traumatic cardaic arrest
RTC	TAMWORTH	Push bike vs Car RTC- traumatic cardaic arrest hmed53 confirmed deceased at scene
Falls	Hanley	Pt fell down stairs ? neck inj. Deceased on arrival
RTC	Hereford Hospital	
Stabbing	Warwick	

**Total 16**



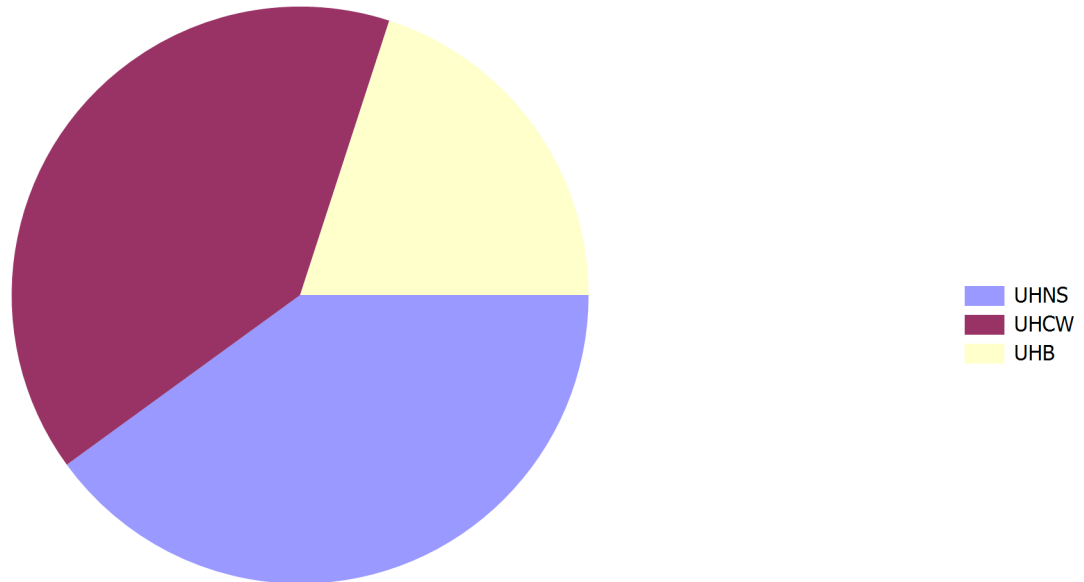
	April	May	June	July	August	September	October	November	December	January	February	March	YTD
<b>No. of Out of Area Cases</b>	3	2											<b>5</b>

Case Origin	
Other / Unknown	1
NWAS	1
South Central	1
EMAS	1
WELSH AMB Service	1
<b>Total</b>	<b>5</b>

Tool Triggered By	
Step 1: Vital Signs	2
Step 2: Anatomy of Injury	3
<b>Total</b>	<b>5</b>

Trauma Injury Type	
Falls	1
RTC	3
Leisure Activity	1
<b>Total</b>	<b>5</b>

**Patient Destination**

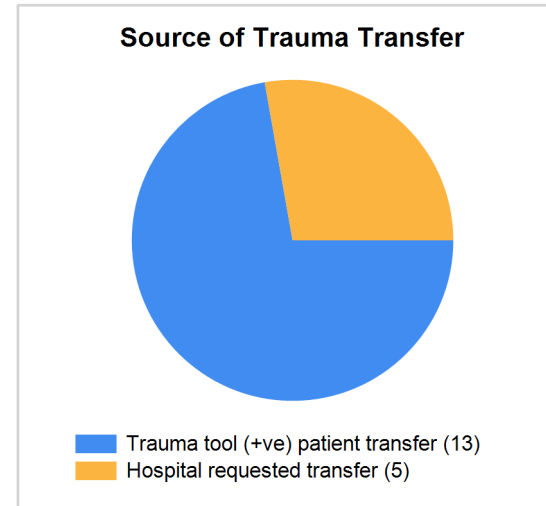




Data includes out of area transfers

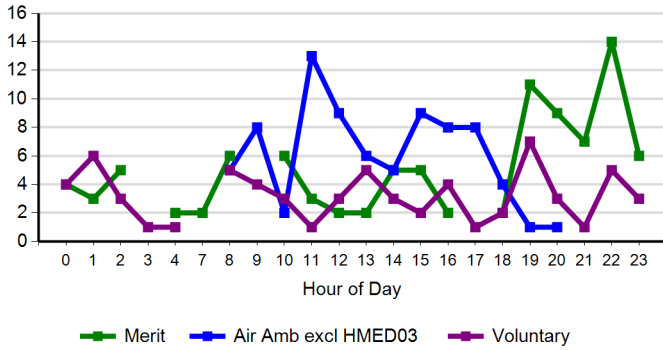
	April	May	June	July	August	September	October	November	December	January	February	March	YTD
<b>No. of Transfers</b>	5	13											<b>18</b>

Transfer From	Transfer To					Total
	Birmingham Childrens	Not MTC	RSUH	UHB	UHCW	
Alexandra	0	0	0	1	0	1
City, Birmingham	1	0	0	0	0	1
Heartlands	1	0	0	1	0	2
Hereford	0	1	0	0	1	2
LEH	1	0	0	0	2	3
Royal Shrewsbury	0	0	5	0	0	5
Russells Hall	0	0	0	1	0	1
Sandwell	1	0	0	0	0	1
UHB	0	1	0	0	0	1
Walsall Manor	1	0	0	0	0	1
<b>Total</b>	<b>5</b>	<b>2</b>	<b>5</b>	<b>3</b>	<b>3</b>	<b>18</b>

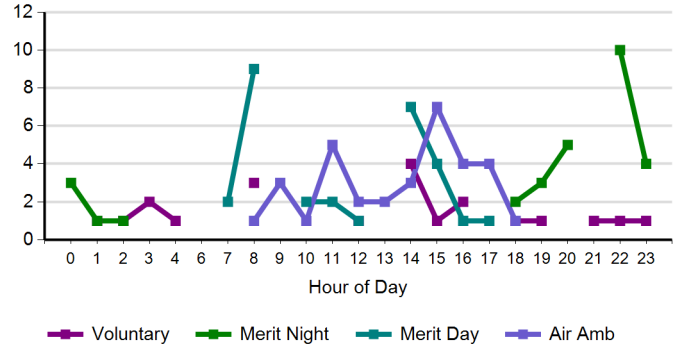




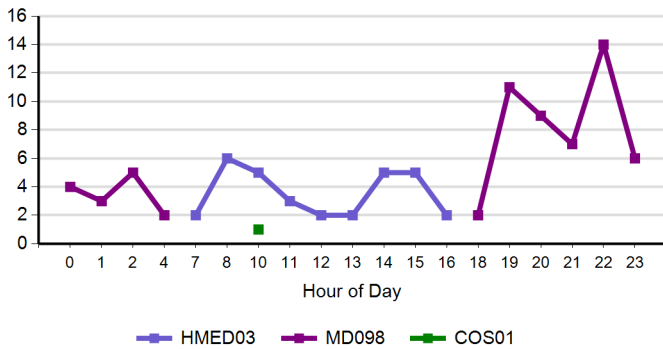
**All Cases Attended - By Group**



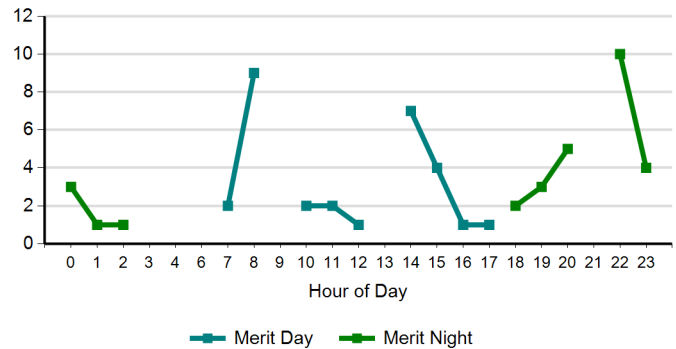
**Trauma Cases Attended - By Group**



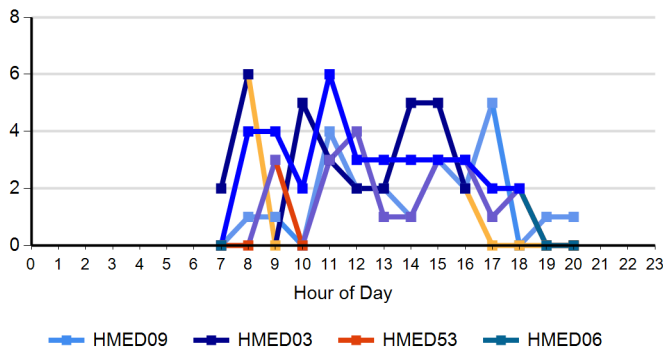
**All Cases Attended by MERIT**



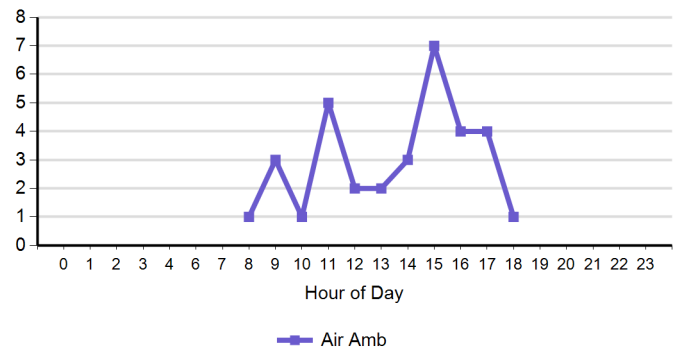
**Trauma Cases Attended by MERIT**



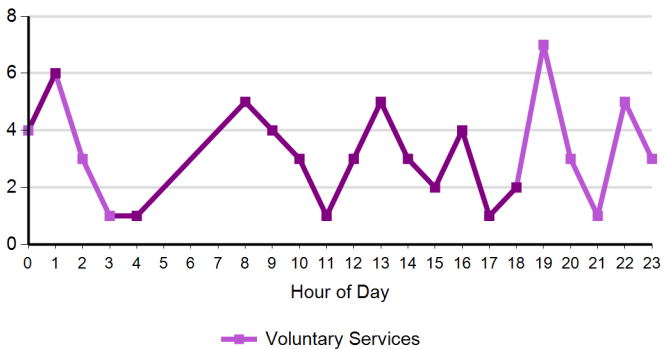
**All Cases Attended by Air Ambulance**



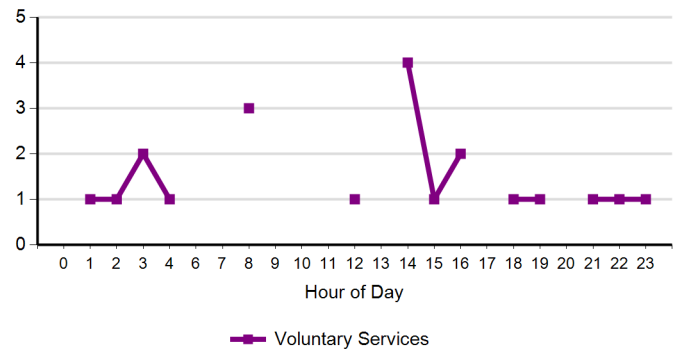
**Trauma Cases Attended by Air Ambulance**



**All Cases Attended by Voluntary Services**



**Trauma Cases Attended by Voluntary Services**



\* Please note the scales on the charts above are not the same



**Responses at scene by Chief Complaint (All Cases)**

	Total	Air Amb excl HMED03	Merit	Voluntary
Trauma	32	14	12	6
Falls	31	12	13	6
Unconscious	30	9	8	13
RTC	26	11	9	6
RTC Entrapment/Ejection	22	7	9	6
Rollover				
RTC Multiple Patients	21	5	13	3
Stabbing	11	1	7	3
Assaults	10		4	6
Cardiac Arrest	9	1	6	2
Generally Ill	8	4		4
Psychiatric or Suicide	8		5	3
Life Threatening Situation	6		3	3
Chest Pain	4	3		1
Red 2	3	2	1	
Breathing Problems	2		1	1
Green 2	2	2		
Overdose	2		1	1
Convulsions	1			1
Abdo Pain	1	1		
Drowning	1		1	
Head Pain	1		1	
Traumatic Inj	1	1		
Dx011	1		1	
Building On Fire	1			1
Burn	1		1	
Bleeding Non Traumatic	1	1		
Running Call	1			1
Red 1	1	1		
No Value	1	1		
Stroke	1	1		
Fainting	1	1		
Unknown Problem	1	1		
<b>Total</b>	<b>242</b>	<b>79</b>	<b>96</b>	<b>67</b>

**Responses at scene by Injury Type (Trauma Cases)**

	Total	Air Amb	Merit Day	Merit Night	Voluntary
RTC	71	22	21	17	11
Falls	19	4	4	5	6
Stabbing	8	1		4	3
Industrial Injury	4	3	1		
Other Transport Collision	3	1		1	1
Leisure Activity	3	1	2		
Burns	2			2	
Assault	1		1		
Agricultural Accident	1	1			
Other					
Unknown					
Shooting					
<b>Total</b>	<b>112</b>	<b>33</b>	<b>29</b>	<b>29</b>	<b>21</b>



**Transports by Destination (All Cases)**

	Total	Air Amb excl HMED03	Merit	Voluntary
New Queen Elizabeth Hosp	19	4	14	1
Royal Stoke Univ Hosp	17	10	7	
Uni Hospital Cov & War	15	12	3	
Worcestershire Royal	4	3		1
Hereford County	3	3		
Birmingham Childrens	2	1	1	
Russells Hall	2		1	1
Unspecified Hospital	2	2		
Heartlands	2		2	
Alexandra	1	1		
ROYAL DERBY HOSPITAL	1	1		
City (Birmingham)	1			1
Gloucester Dialysis Unit	1	1		
<b>Total</b>	<b>70</b>	<b>38</b>	<b>28</b>	<b>4</b>

**Transports by Destination (Trauma Cases)**

	Total	Air Amb	Merit	Voluntary
Heartlands	2		2	
UHB	14	2	11	1
Royal Stoke Univ Hosp	9	3	6	
Russells Hall	1			1
UHCW	10	9	1	
Unspecified Hospital	1	1		
<b>Total</b>	<b>37</b>	<b>15</b>	<b>20</b>	<b>2</b>

**Average time on scene per response (All Cases)**

	Total	Air Amb excl HMED03	Merit	Voluntary
<b>Average</b>	<b>0:38:22</b>	<b>0:37:16</b>	<b>0:36:41</b>	<b>0:42:04</b>

**Average time on scene per response \* (Trauma Cases)**

	Total	Air Amb	Merit	Voluntary
<b>Average</b>	<b>0:48:48</b>	<b>0:45:53</b>	<b>0:45:45</b>	<b>1:01:47</b>

\* For Trauma cases where the callsigns are in the specified list  
Merit = COS01, HMED03, MD098  
Air Amb = HMED06, HMED09, HMED53  
Voluntary = MD callsigns excluding MD098 and MD099  
Entrapments and RSI on scene are excluded (where known).

**Average time on scene per response \* (Trauma Cases where RSI was undertaken)**

	Total	Air Amb	Merit	Voluntary
<b>Average</b>	<b>1:04:47</b>	<b>0:55:35</b>	<b>0:39:00</b>	<b>2:27:38</b>

\* For Trauma cases where the callsigns are in the specified list  
Merit = COS01, HMED03, MD098  
Air Amb = HMED06, HMED09, HMED53  
Voluntary = MD callsigns excluding MD098 and MD099  
Entrapments are excluded (where known).





**Incident Job Cycle Time for Transfers to MTC undertaken by MERIT (All Cases)**

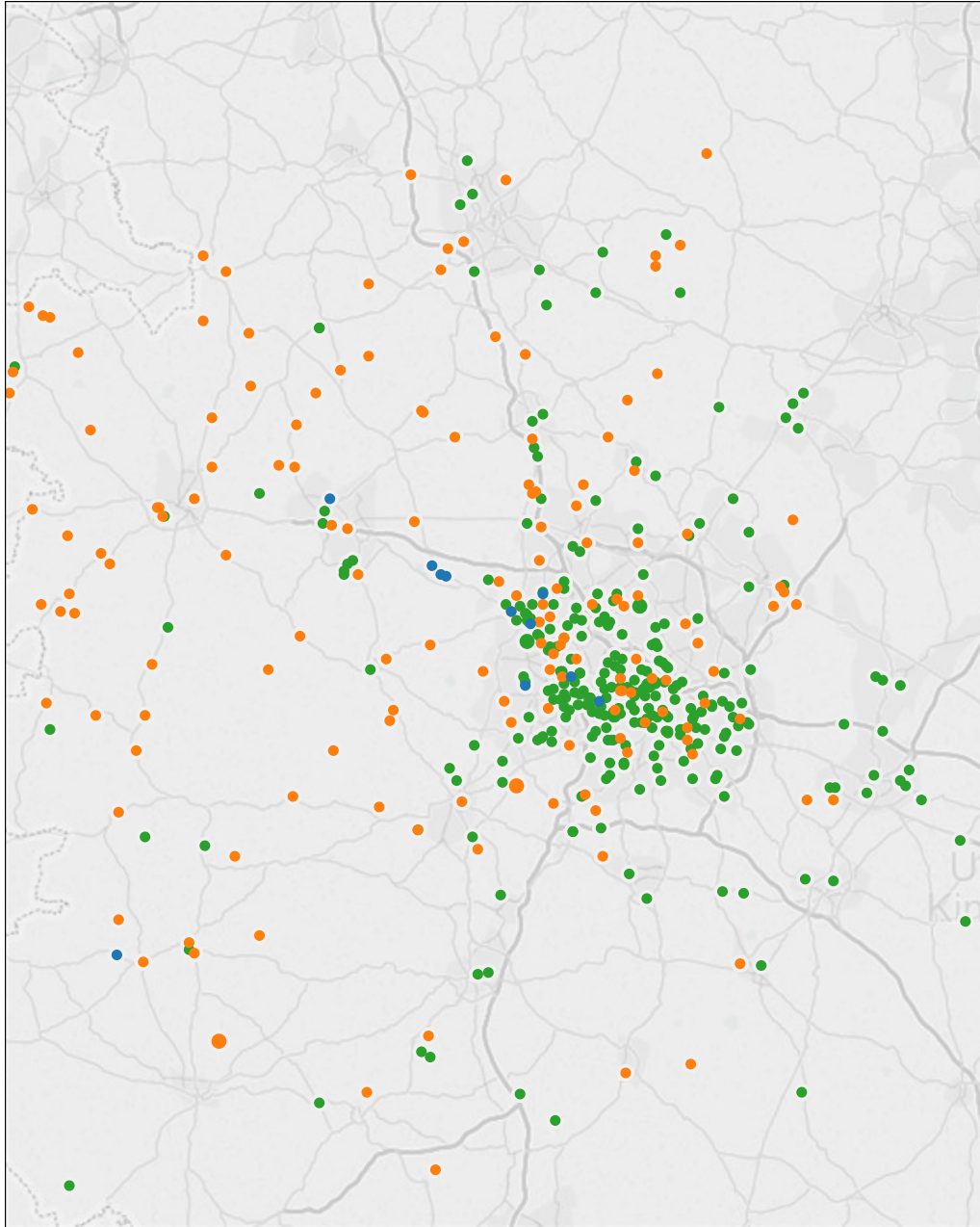
Case Nr	Date	Call Sign	Transfer From	Transfer To (MTC)	Time Call Connected	Max Clear	Job Cycle
W10052015_02369	10/05/15	MD098	Staffs General	Birmingham Childrens	10/05/2015 20:15:42	10/05/2015 23:08:42	2:53:00
<b>1 Cases</b>			<b>Average Incident Job Cycle (Call Connect to maximum clear time)</b>				<b>2:53:00</b>

Data shows transfers from a WMAS hospital (TU / LEH) to an MTC undertaken by MERIT (call signs HMED03, COS01 or MD098).

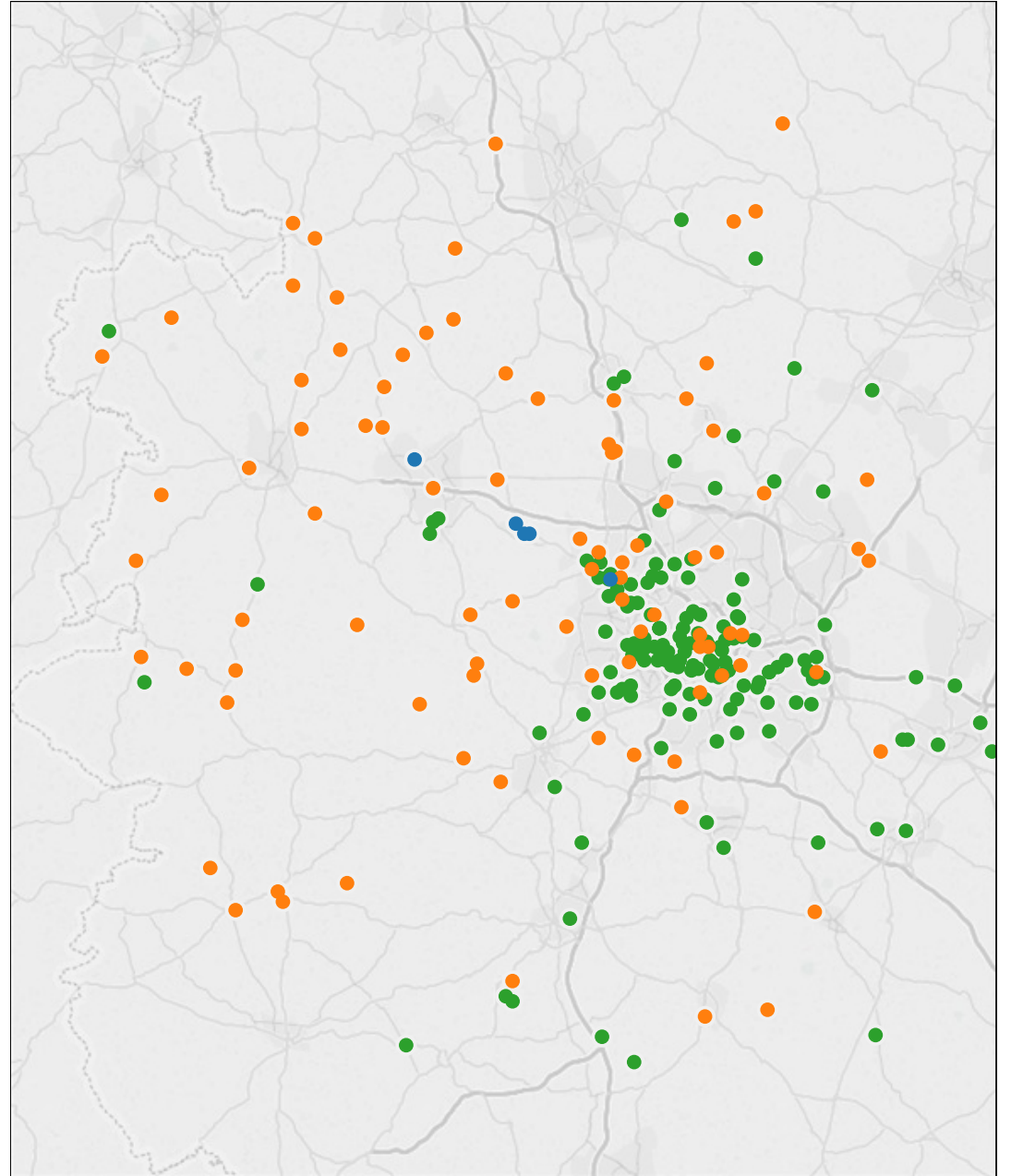
# MERIT Activity (All cases from CAD)

2015/16

Allocated Incidents



Attended Incidents

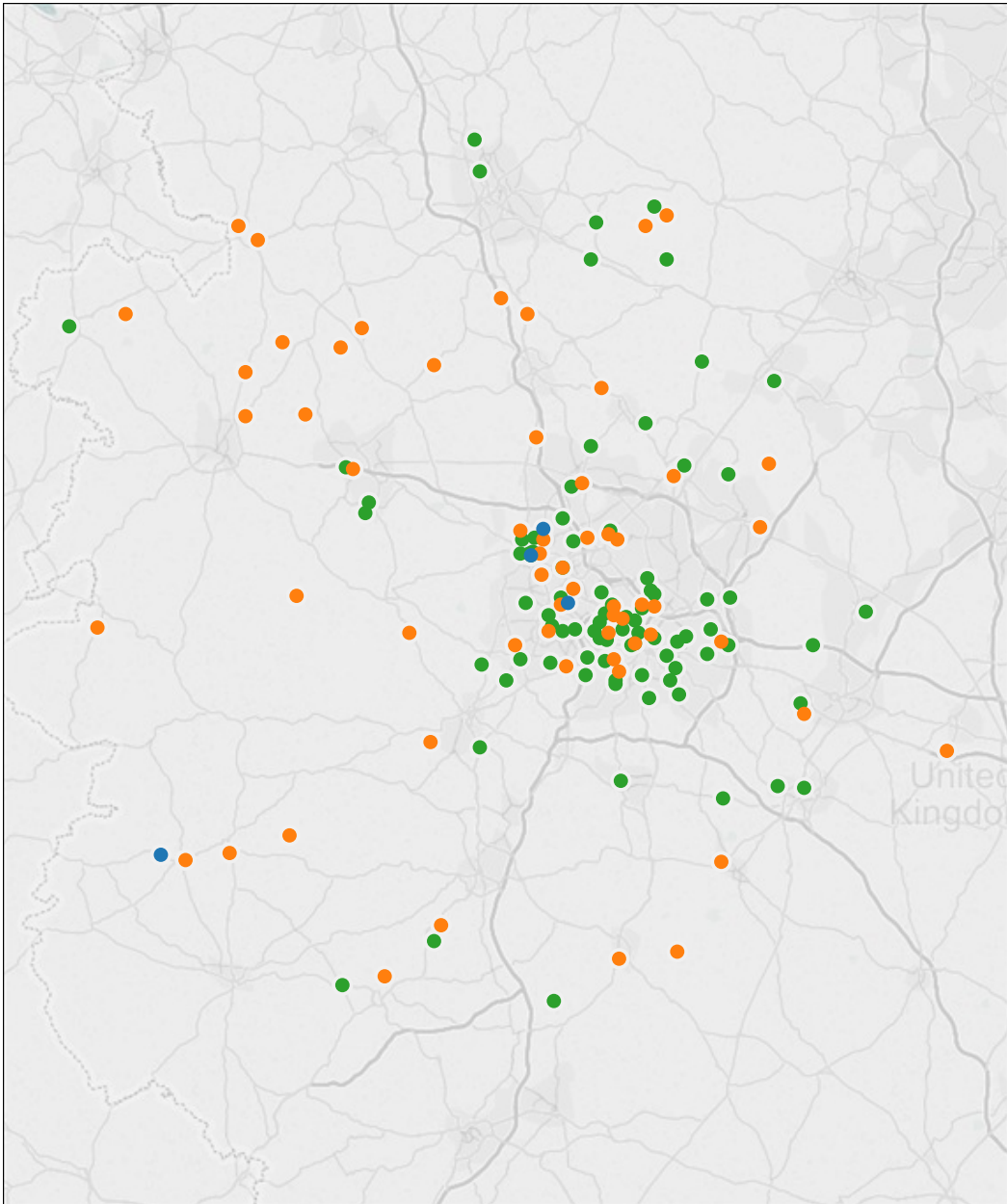


callsign    ■ COS01    ■ HMED03    ■ MD098

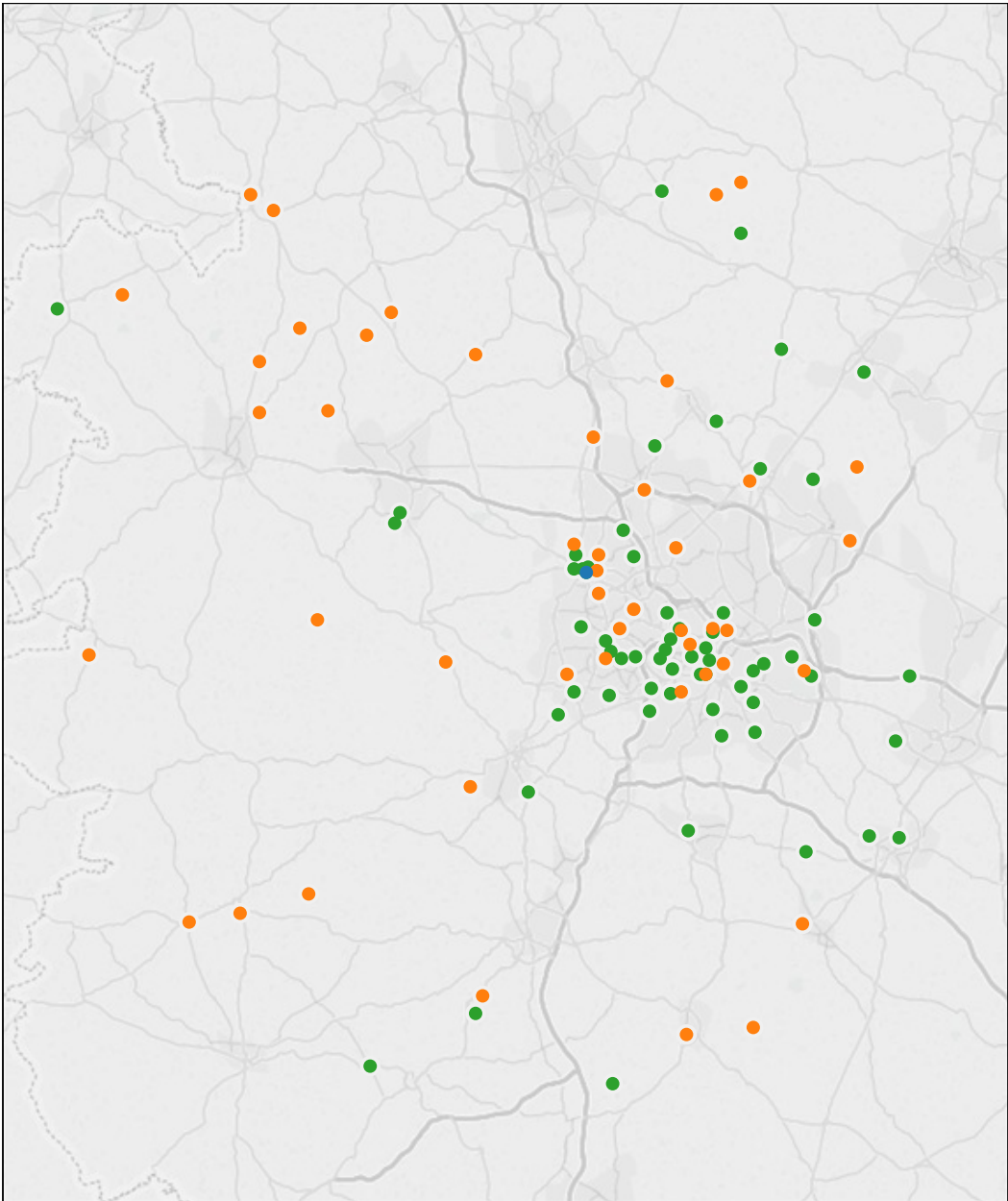
# MERIT Activity (Trauma +ve cases only)

2015/16

Allocated Incidents



Attended Incidents

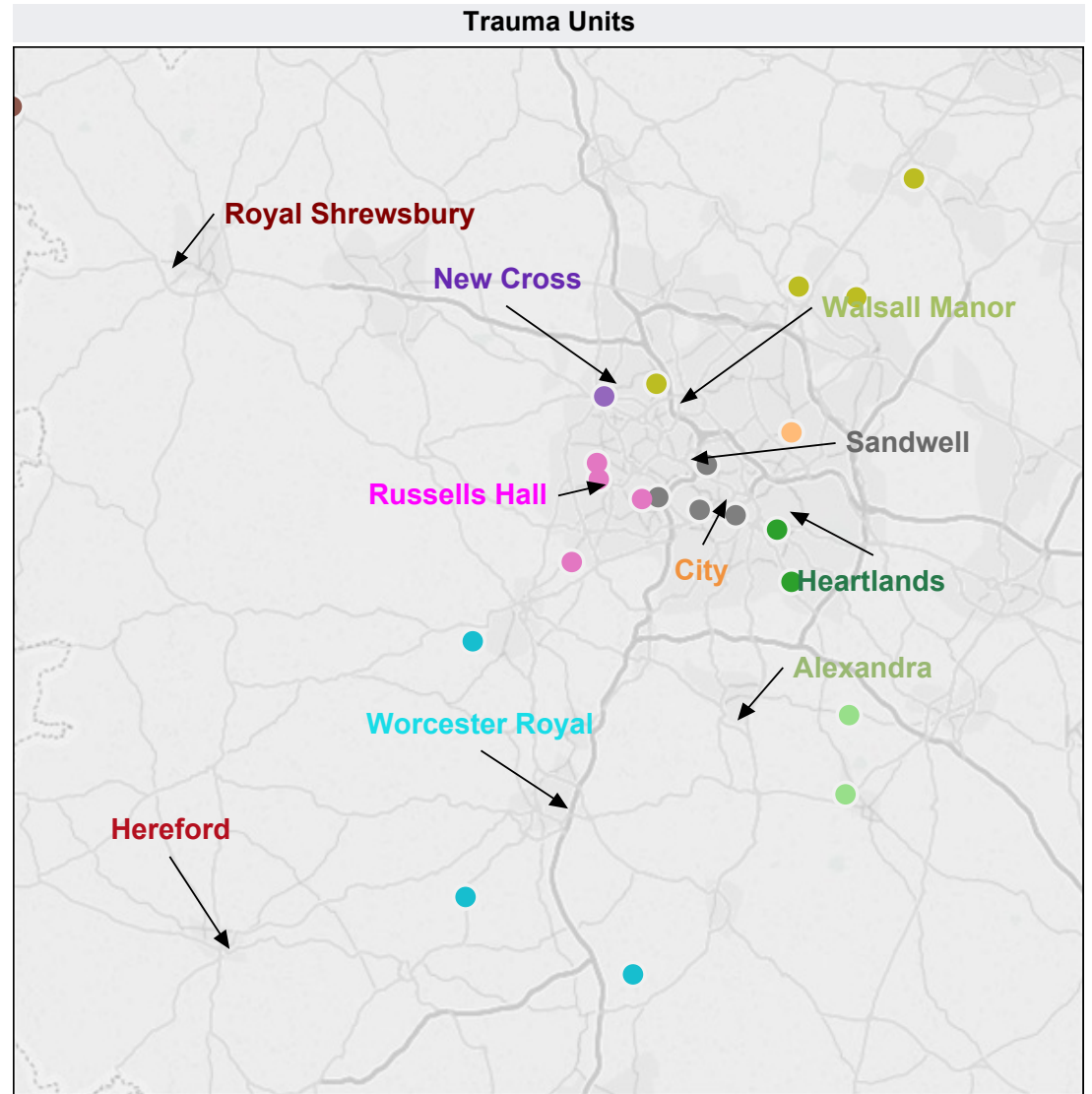
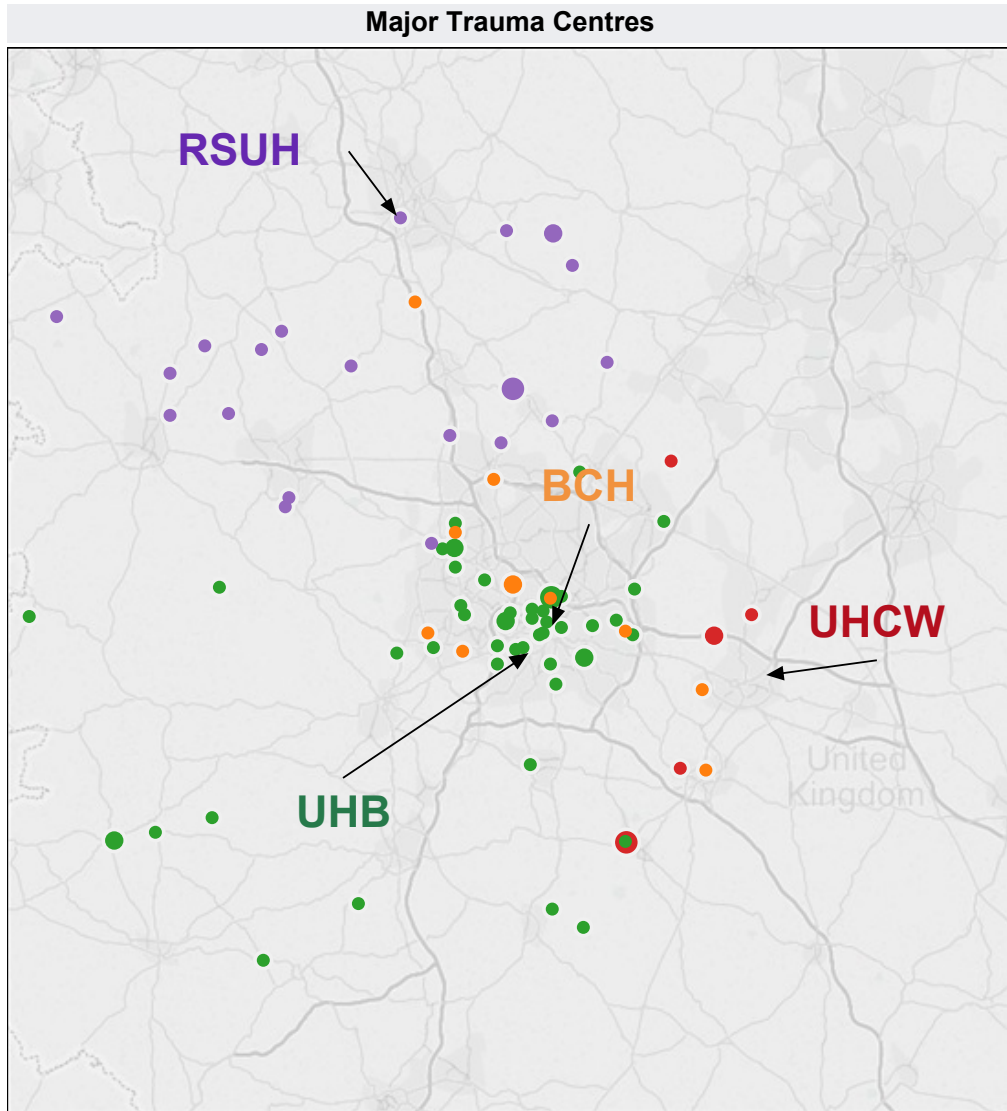


callsign    ■ COS01    ■ HMED03    ■ MD098

This data does not include cases where the crews are not contacting the Regional Trauma Desk, any trauma transfers or cases which are responded to by out of area resources.

# Incident Location of Trauma +ve Patients Conveyed to MTCs and TUs by MERIT

2015/16



**Major Trauma Centre**

- Birmingham Childrens
- RSUH
- UHB
- UHCW

**Trauma Unit**

- Alexandra
- Royal Shrewsbury
- Worcester Royal
- City, Birmingham
- Russells Hall
- Sandwell
- Heartlands
- New Cross
- Walsall Manor

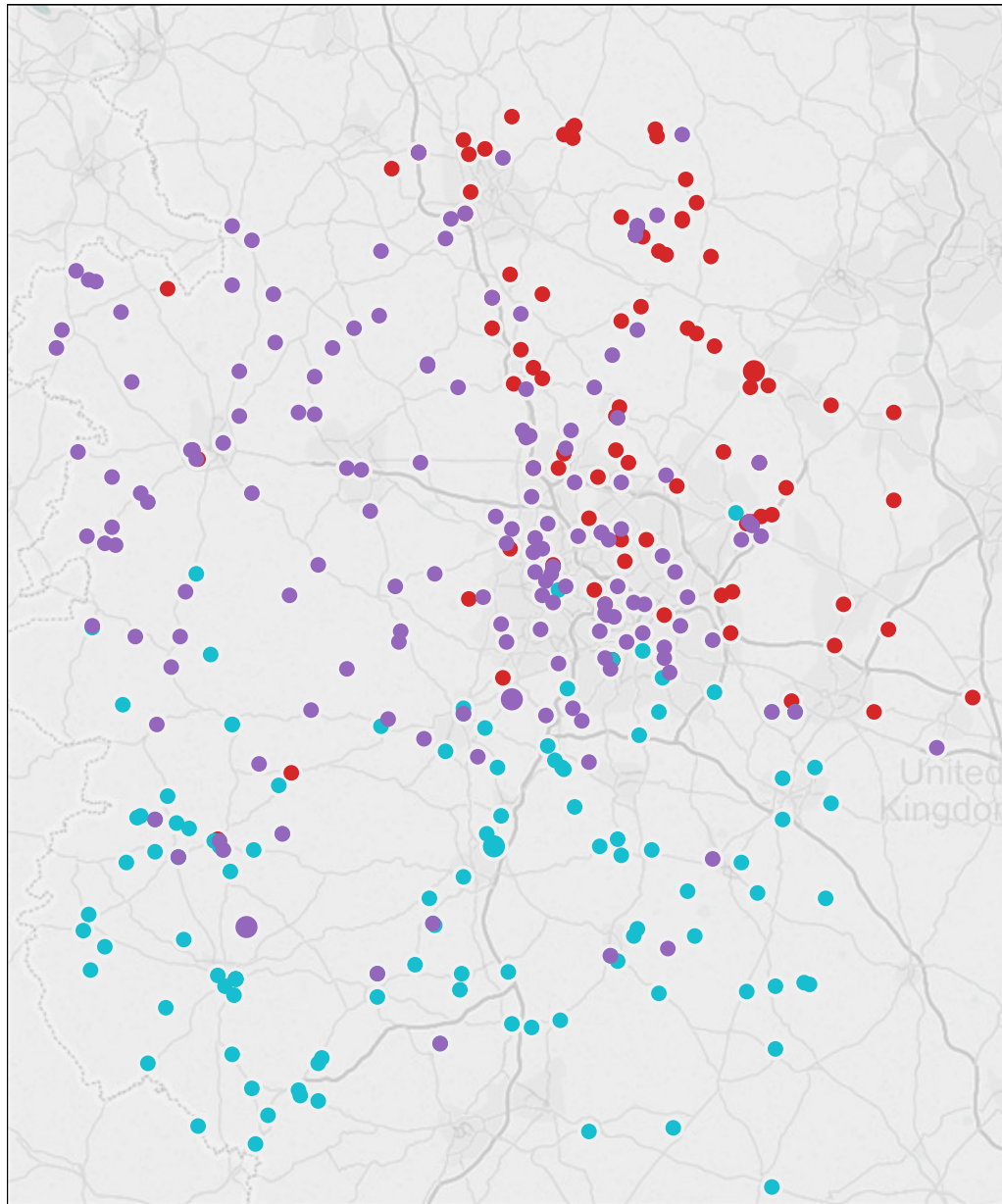
This data does not include cases where the crews are not contacting the Regional Trauma Desk, any trauma transfers or cases which are responded to by out of area resources.



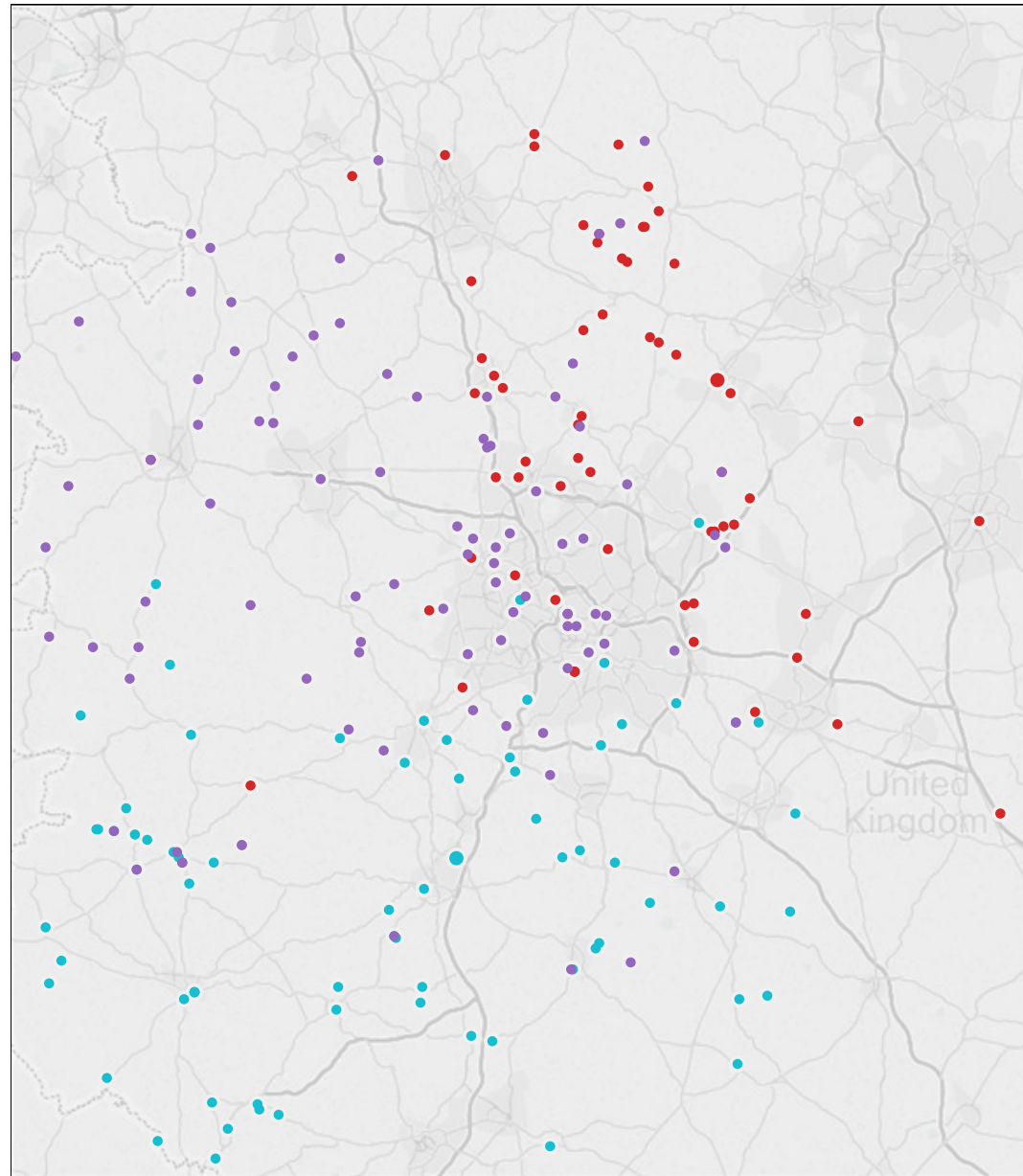
# Air Ambulance Activity (All cases from CAD)

2015/16

Allocated Incidents



Attended Incidents



callsign

HMED03

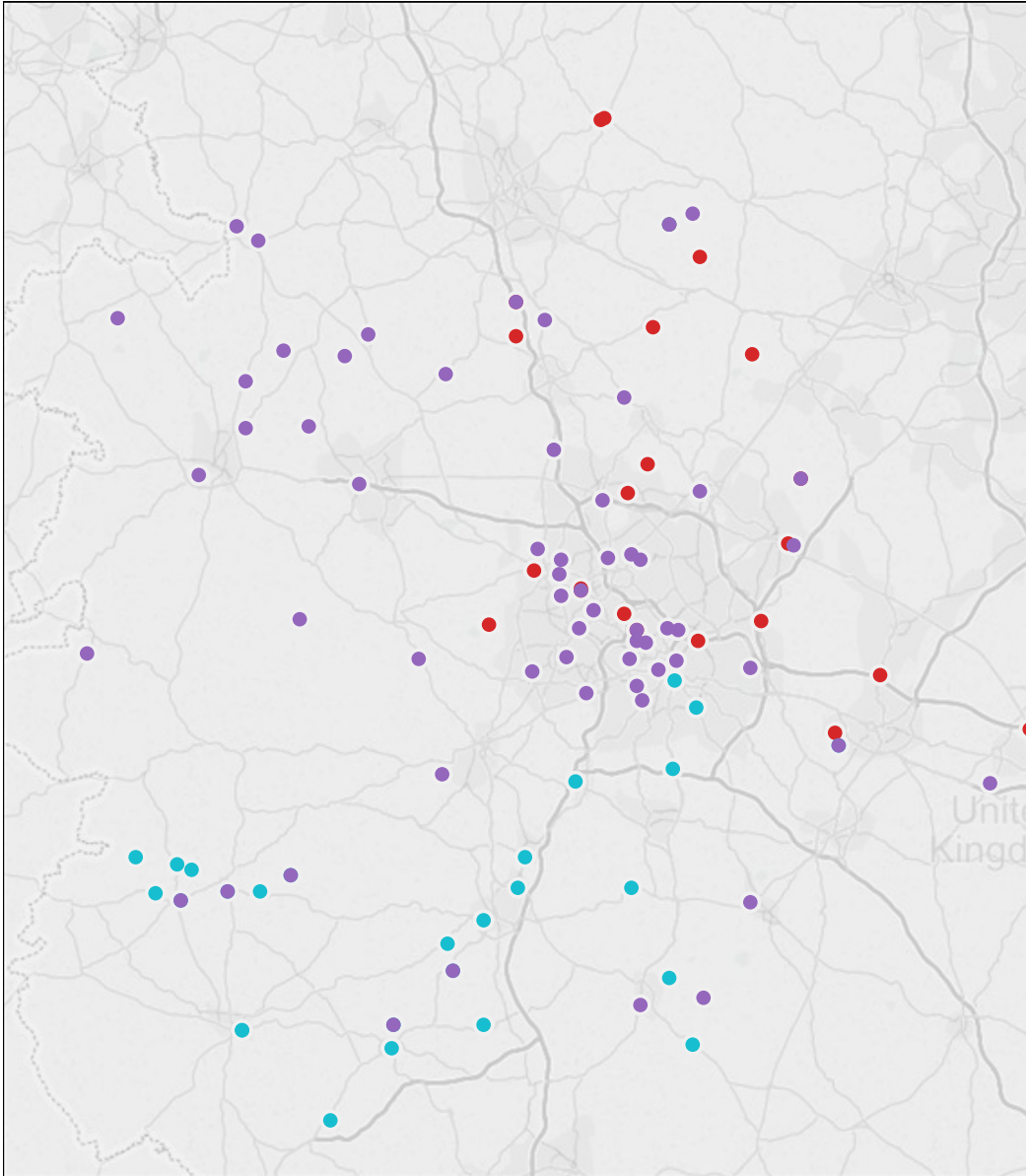
HMED06

HMED09

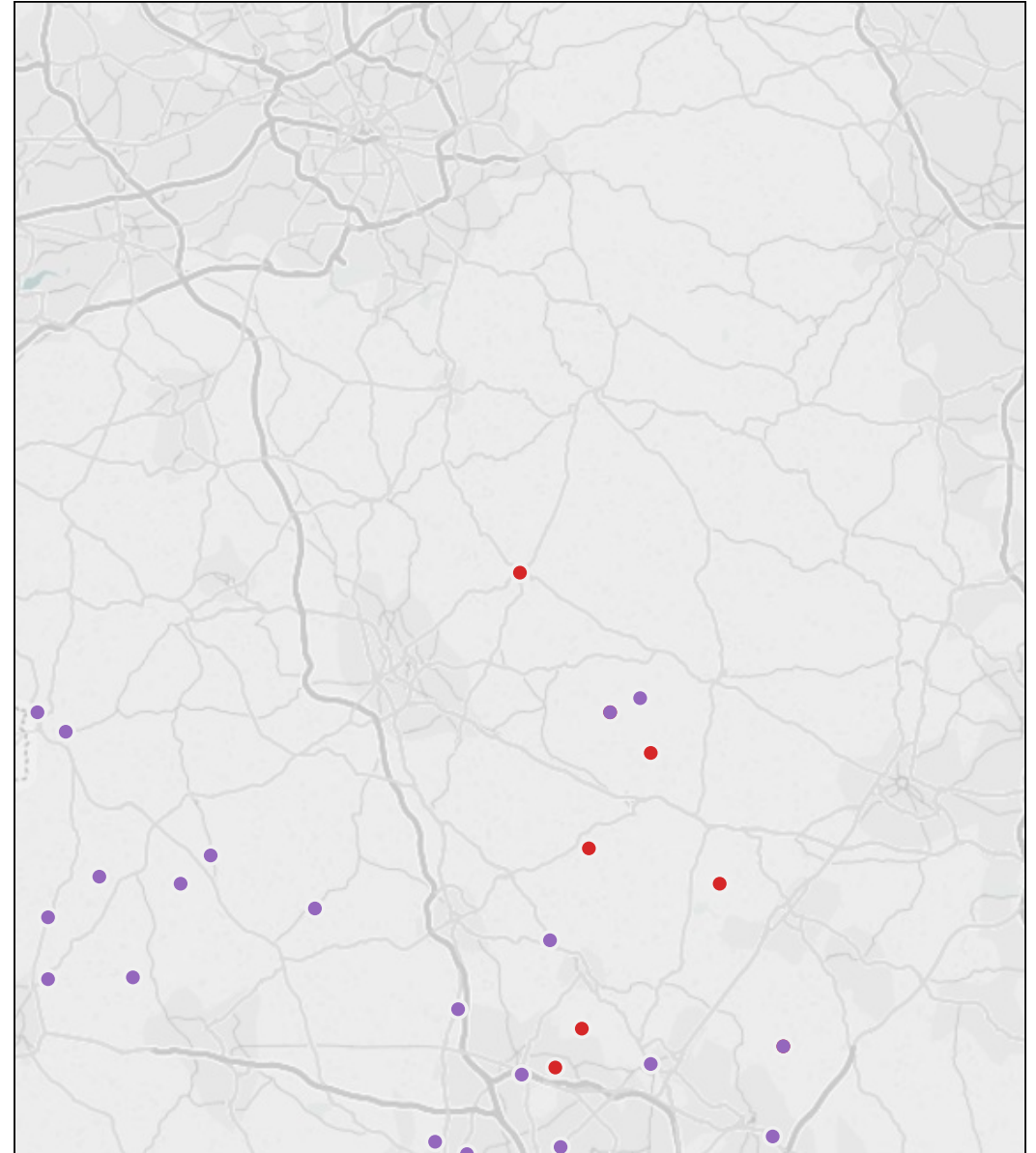
# Air Ambulance Activity (Trauma +ve cases only)

2015/16

Allocated Incidents



Attended Incidents

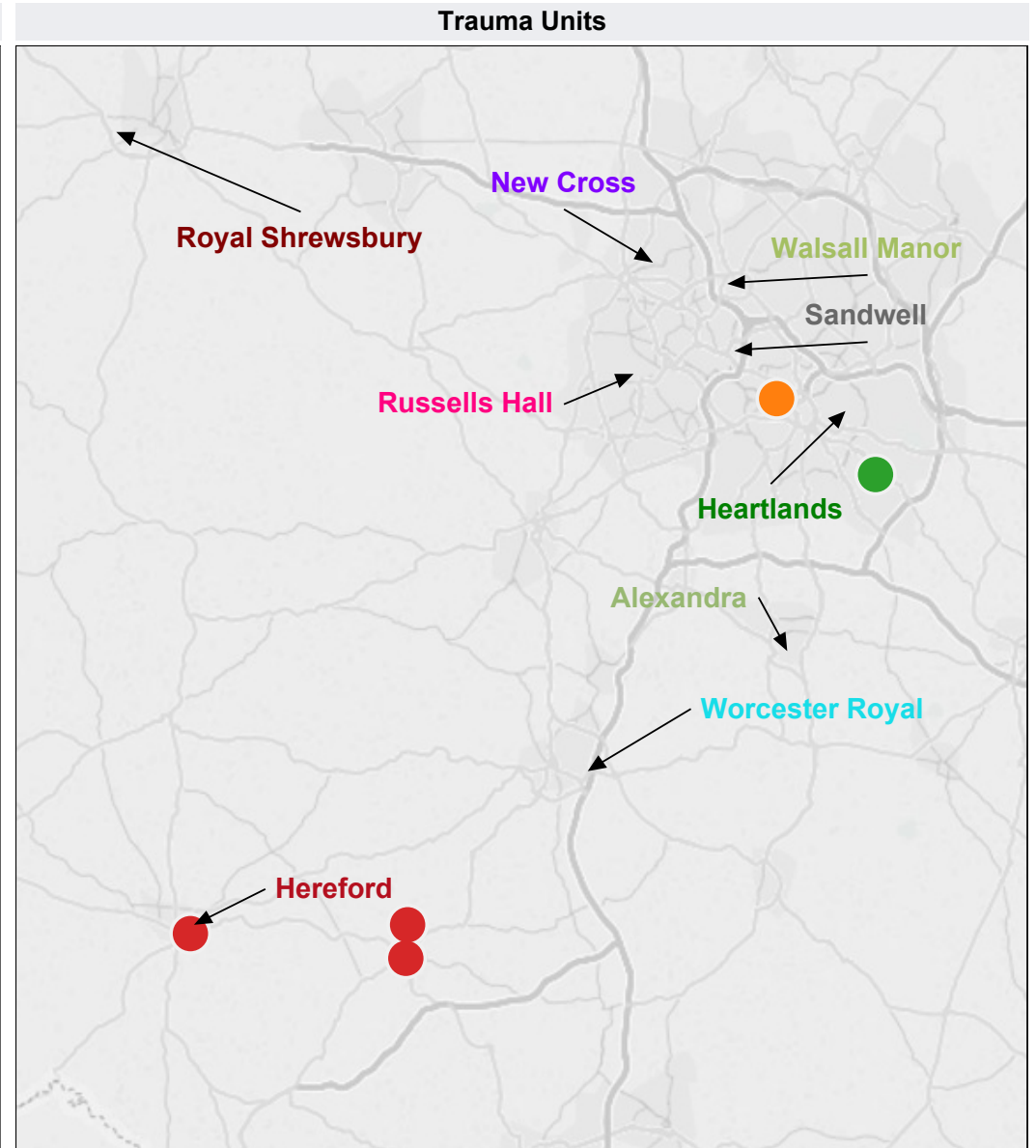
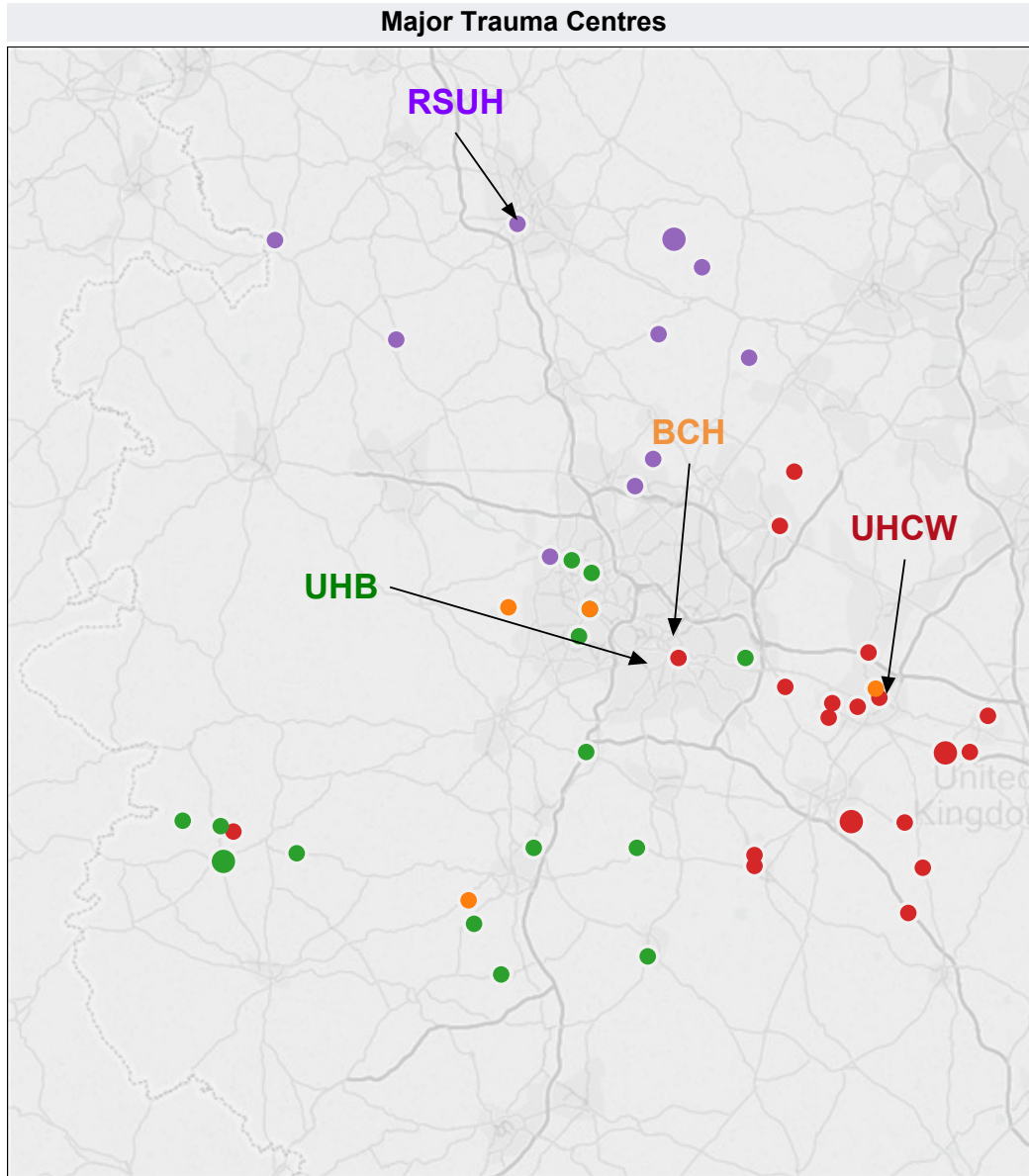


callsign    ■ HMED03    ■ HMED06    ■ HMED09

This data does not include cases where the crews are not contacting the Regional Trauma Desk, any trauma transfers or cases which are responded to by out of area resources.

# Incident Location of Trauma +ve Patients Conveyed to MTCs and TUs by Air Ambulance

2015/16



- Major Trauma Centre**
- Birmingham Childrens
  - RSUH
  - UHB
  - UHCW

- Trauma Unit**
- City
  - Heartlands
  - Hereford

This data does not include cases where the crews are not contacting the Regional Trauma Desk, any trauma transfers or cases which are responded to by out of area resources.